

9/09/2020

TVNP. Natural Assets Working Group (NAWG). Potential Local Wildlife Site.

### South Bank Station Black Path

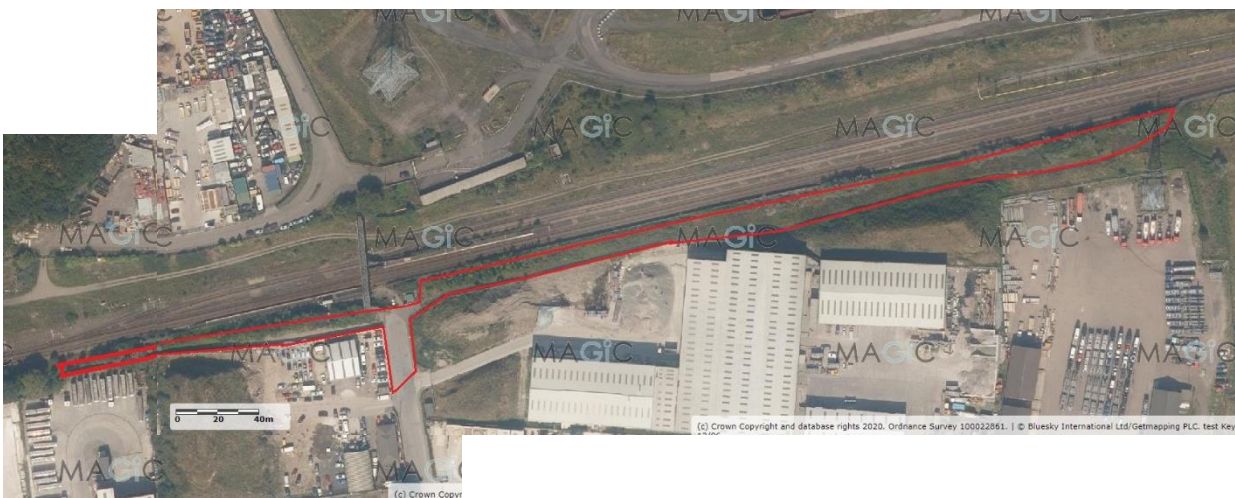
Assessed:

Decision: Pended.

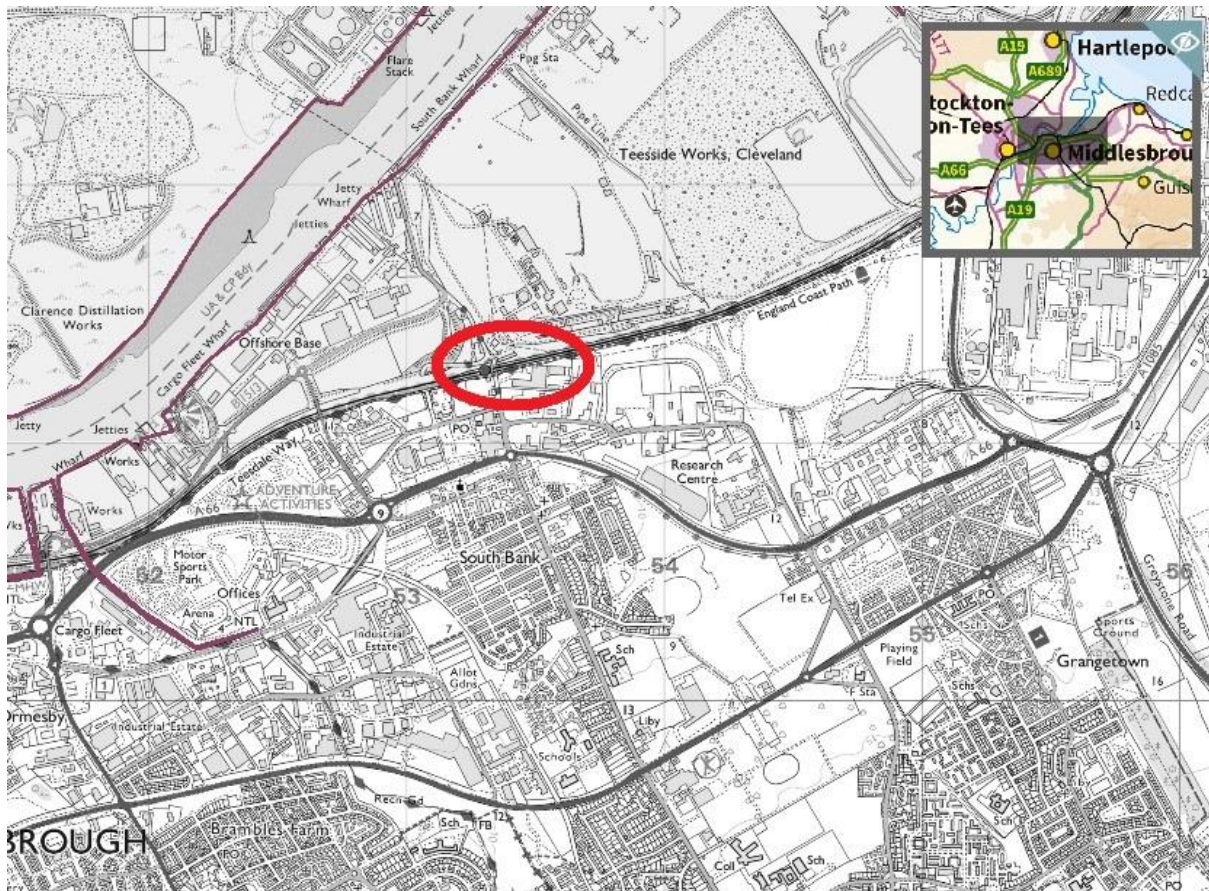
Notes: Urban grassland site of high species diversity alongside the England Coast Path and Teesdale Way; notable also for floral display of non-native crown vetch.

- Site name: **South Bank Station Black Path**
- OS National Grid Ref: NZ5318121243 to NZ5372821371
- Land ownership: Redcar & Cleveland Council
- Contact: ?
- District: Redcar & Cleveland Borough Council
- Qualifying feature: Urban grassland
- Tees Valley Nature Partnership Qualifying criteria code: U1
- Most recent site survey date: 5 July 2019
- Research and survey undertaken by Martin Allen
- Location of site details and evidence: see below
- Recommended management: Generally non-intervention, however it may need periodic cutting and removing of arisings, shrub coppicing, and/or ground disturbance.
- Recent management history: none
- Site in positive management: Yes (5 July 2019)
- Date of LWS recommendation by Tees Valley Nature Partnership: **To be confirmed.**

### Site extent



## Site location



## Botanical survey

The site was surveyed as part of the River Tees Rediscovered project and supports 15 species from Appendix 6 of the Guidelines for the Selection of local Wildlife Sites in the Tees Valley (June 2010); Urban Grassland – grasslands that have developed on urban sites, often on substrates comprised of waste materials such as steelworks slag.

At least 10 species are required for LWS status.

Scientific name	Common name
<i>Acer campestre</i>	Field Maple
<i>Achillea millefolium</i>	Yarrow
<i>Agrostis stolonifera</i>	Creeping Bent
<i>Alnus glutinosa</i>	Alder
<i>Anacamptis pyramidalis</i>	Pyramidal Orchid
<i>Anisantha sterilis</i>	Barren Brome
<i>Anthyllis vulneraria</i>	Kidney Vetch
<i>Arctium</i> sp.	a burdock
<i>Arrhenatherum elatius</i>	False Oat-Grass

<i>Artemisia vulgaris</i>	Mugwort
<i>Ballota nigra</i>	Black Horehound
<i>Bellis perennis</i>	Daisy
<b><i>Bromus hordeaceus</i></b>	<b>Soft-brome</b>
<i>Calystegia sepium</i>	Hedge Bindweed
<i>Catapodium rigidum</i>	Fern-grass
<i>Centaurea nigra</i>	Common Knapweed
<i>Centranthus ruber</i>	Red Valerian
<i>Cerastium fontanum</i>	Common Mouse-ear
<i>Chamerion angustifolium</i>	Rosebay Willowherb
<i>Chenopodium album</i>	Fat-hen
<i>Cirsium arvense</i>	Creeping Thistle
<i>Cirsium vulgare</i>	Spear Thistle
<i>Conium maculatum</i>	Hemlock
<i>Cornus alba</i>	White Dogwood
<i>Cotoneaster simonsii</i>	Himalayan Cotoneaster
<i>Crataegus monogyna</i>	Hawthorn
<i>Crepis capillaris</i>	Smooth Hawk's-beard
<i>Cymbalaria muralis</i>	Ivy-leaved Toadflax
<i>Dactylis glomerata</i>	Cock's-foot
<b><i>Daucus carota</i> subsp. <i>carota</i></b>	<b>Wild Carrot</b>
<b><i>Diplotaxis tenuifolia</i></b>	<b>Perennial Wall-rocket</b>
<i>Dipsacus fullonum</i>	Wild Teasel
<i>Elytrigia repens</i>	Common Couch
<i>Elytrigia repens</i> f. <i>aristata</i>	Common Couch
<i>Epilobium parviflorum</i>	Hoary Willowherb
<i>Epilobium tetragonum</i>	Square-stalked Willowherb
<i>Equisetum arvense</i>	Field Horsetail
<i>Festuca rubra</i>	Red Fescue
<i>Fraxinus excelsior</i>	Ash
<i>Galium album</i>	Hedge Bedstraw
<i>Galium aparine</i>	Cleavers
<i>Galium verum</i>	Lady's Bedstraw
<i>Geranium dissectum</i>	Cut-leaved Crane's-bill
<i>Geranium pratense</i>	Meadow Crane's-bill
<i>Geranium robertianum</i>	Herb-Robert
<i>Geum urbanum</i>	Wood Avens
<i>Hedera helix</i>	Ivy
<i>Heracleum sphondylium</i>	Hogweed
<b><i>Hirschfeldia incana</i></b>	<b>Hoary Mustard</b>
<i>Holcus lanatus</i>	Yorkshire-fog
<i>Hordeum murinum</i>	Wall Barley
<i>Hypericum perforatum</i>	Perforate St John's-wort
<i>Hypochaeris radicata</i>	Cat's-ear
<i>Knautia arvensis</i>	Field Scabious

<i>Lactuca virosa</i>	Great Lettuce
<i>Lamium album</i>	White Dead-nettle
<i>Lathyrus pratensis</i>	Meadow Vetchling
<i>Lepidium draba</i>	Hoary Cress
<i>Leucanthemum vulgare</i>	Oxeye Daisy
<i>Linaria purpurea</i>	Purple Toadflax
<i>Linaria vulgaris</i>	Common Toadflax
<i>Lolium perenne</i>	Perennial Rye-grass
<i>Lonicera japonica</i>	Japanese Honeysuckle
<i>Malva sylvestris</i>	Common Mallow
<i>Medicago lupulina</i>	Black Medick
<i>Medicago sativa</i> nothosubsp. <i>varia</i>	Sand Lucerne
<i>Melilotus altissimus</i>	Tall Melilot
<i>Melilotus officinalis</i>	Ribbed Melilot
<i>Odontites vernus</i>	Red Bartsia
<i>Papaver rhoeas</i>	Common Poppy
<i>Papaver somniferum</i>	Opium Poppy
<i>Pastinaca sativa</i> subsp. <i>sylvestris</i>	Wild Parsnip
<i>Phalaris canariensis</i>	Canary Grass
<i>Phleum bertolonii</i>	Smaller Cat's-tail
<i>Phleum pratense</i>	Timothy
<i>Plantago lanceolata</i>	Ribwort Plantain
<i>Poa annua</i>	Annual Meadow-grass
<i>Polygonum aviculare</i>	Knotgrass
<i>Populus tremula</i>	Aspen
<i>Populus x canescens</i>	Grey Poplar (P. alba x tremula)
<i>Potentilla reptans</i>	Creeping Cinquefoil
<i>Prunella vulgaris</i>	Selfheal
<i>Prunus avium</i>	Wild Cherry
<i>Ranunculus acris</i>	Meadow Buttercup
<i>Ranunculus repens</i>	Creeping Buttercup
<i>Reseda lutea</i>	Wild Mignonette
<i>Reseda luteola</i>	Weld
<i>Rosa rugosa</i>	Japanese Rose
<i>Rosa</i> sp.	a Rose
<i>Rubus fruticosus</i>	Bramble
<i>Rumex crispus</i>	Curled Dock
<i>Rumex obtusifolius</i>	Broad-leaved Dock
<i>Salix caprea</i>	Goat Willow
<i>Salix</i> sp.	a willow
<i>Salix</i> sp.	a willow
<i>Sambucus nigra</i>	Elder
<i>Sambucus nigra</i>	Elder (yellow leaved)
<i>Securigera varia</i>	Crown Vetch
<i>Senecio erucifolius</i>	Hoary Ragwort

<i>Senecio inaequidens</i>	Narrow-leaved Ragwort
<i>Senecio jacobaea</i>	Common Ragwort
<i>Senecio squalidus</i>	Oxford Ragwort
<i>Sinapis arvensis</i>	Charlock
<i>Sonchus oleraceus</i>	Smooth Sow-thistle
<i>Sorbus aucuparia</i>	Rowan
<i>Stachys sylvatica</i>	Hedge Woundwort
<i>Symphoricarpos albus</i>	Snowberry
<i>Taraxacum</i> sp.	Dandelion
<i>Tragopogon pratensis</i>	Goat's-beard
<i>Trifolium arvense</i>	Hare's-foot Clover
<i>Trifolium campestre</i>	Hop Trefoil
<i>Trifolium dubium</i>	Lesser Trefoil
<i>Trifolium pratense</i>	Red Clover
<i>Trifolium repens</i>	White Clover
<i>Tripleurospermum inodorum</i>	Scentless Mayweed
<i>Trisetum flavescens</i>	Yellow Oat-grass
<i>Tussilago farfara</i>	Colt's-foot
<i>Urtica dioica</i>	Common Nettle
<i>Veronica persica</i>	Common Field-speedwell
<i>Vicia cracca</i>	Tufted Vetch
<i>Vicia parviflora</i>	Slender Tare
<i>Vicia sativa</i>	Common Vetch
<i>Vicia sepium</i>	Bush Vetch
<i>Viola arvensis</i>	Field Pansy
<i>Vulpia myuros</i>	Rat's-tail Fescue

Yellow highlighted plants are listed in Appendix 6



5<sup>th</sup> July 2019