

190623

### Candidate grassland Local Wildlife Site in Redcar and Cleveland

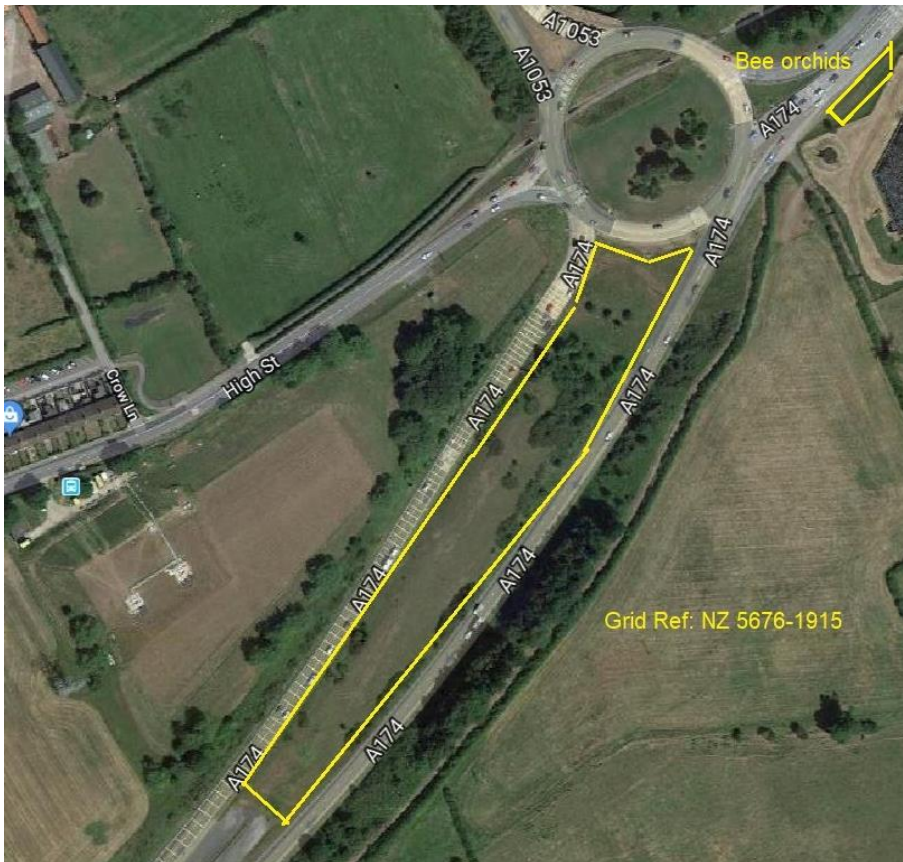
Not sure if any botanists have surveyed this site – I had a fairly brief look on 17/06/2019 and it struck me as a potential Local Wildlife Site for grassland. I have yet to check the guidelines and did not make a comprehensive species list. With pyramidal orchid and bloody cranesbill it could be Calcareous grassland, or it might better fit Neutral grassland.

Surveyor: Graham Megson

Date: 17/06/2019

Time: 18:15 – 17:05 hours

Weather: 8/8, calm, warm.



#### Species noted in a brief walkover

- Bee orchid (O)
- Northern marsh orchid (F)
- Pyramidal orchid (O)
- Common spotted (or heath spotted) orchid (O)
- Quaking grass (F)
- Yellow rattle (A)
- Bird's-foot trefoil (A)
- Bugle (F)
- Tufted vetch (F)
- Red clover (A)
- Bloody cranesbill (R)
- Yellow centaurry (O)
- Ribwort plantain (A)

Common fleabane (Locally frequent)  
Common sedge (Locally Frequent)  
Crested dogs-tail (F)  
Various fine grasses  
+ typical rank grassland species

Boletes toadstool sp.  
Burnet moth sp.

There were four bee orchids at the SW end and seven at the NE end. In addition, 53 bee orchids were noted on the verge east of Greystones roundabout.

Likely species of interest

The grassland also looked good for various butterflies including small heath, common blue, brown argus, large and small skipper.

Recommendation: further surveys including botanical and butterflies.

I have seen botanical records for the limestone blocks on Greystones roundabout itself, so the grassland between the A174 carriageways may have been surveyed.

D - Dominant  
A - Abundant  
F - Frequent  
O - Occasional  
R - Rare

Images





End