

Delivering a Natural Capital Approach in Greater Manchester

Krista Patrick

Natural Capital Coordinator, GMCA Environment Team

Tees Nature Conference

28th June 2019

...the scale of the challenge...

Some examples of the assumptions about now to 2040 in the SCATTER GM model



Half of our homes have solar PV plus a further 5.5km² commercial/ground-mounted

Gas accounts for less than 35% of heating supply



61,000 homes a year are retrofitted

Commercial heating demand drops by over 20%



All cars on our roads are zero emissions (tailpipe) by 2035

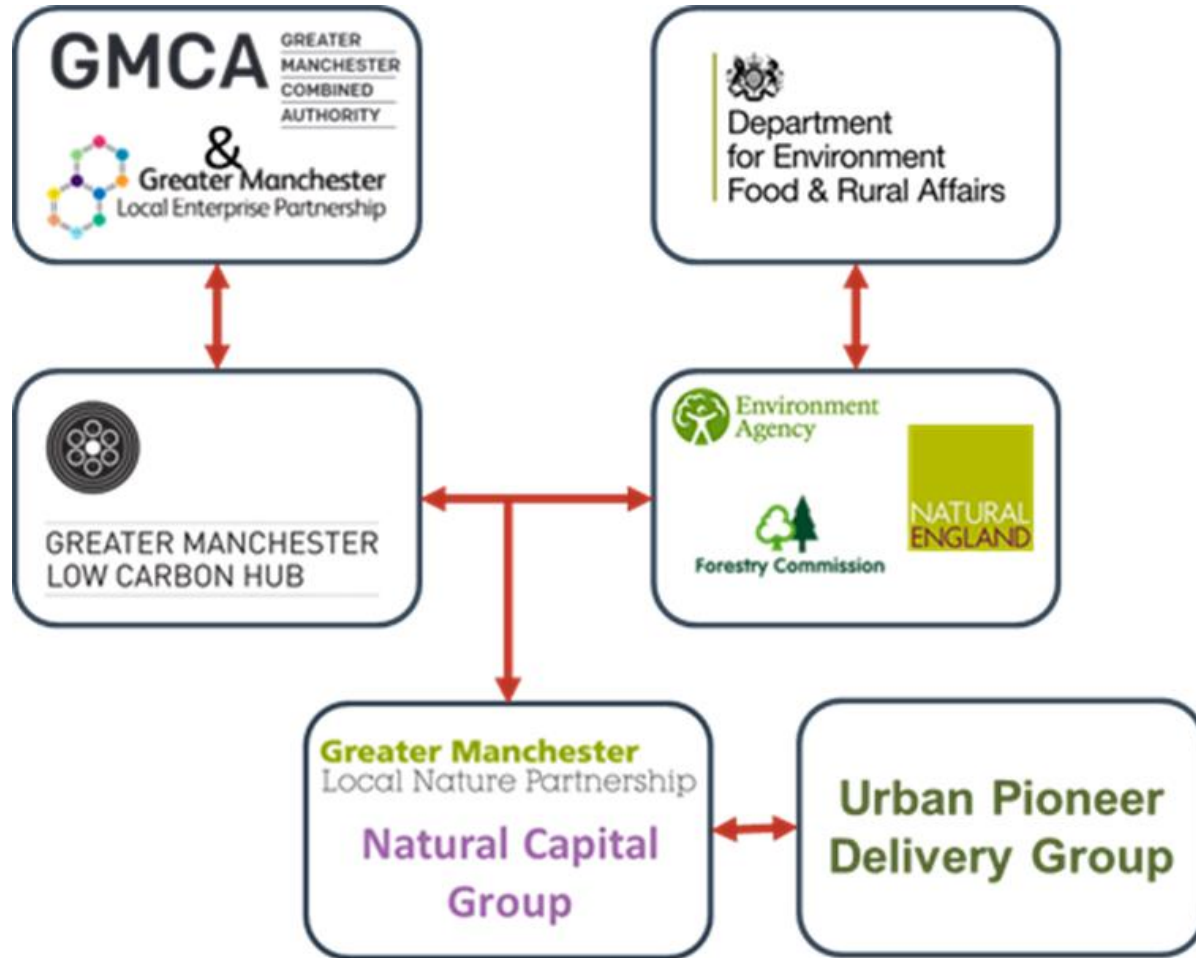


Industrial emissions reduce by 50-75%



3m trees are planted by 2035

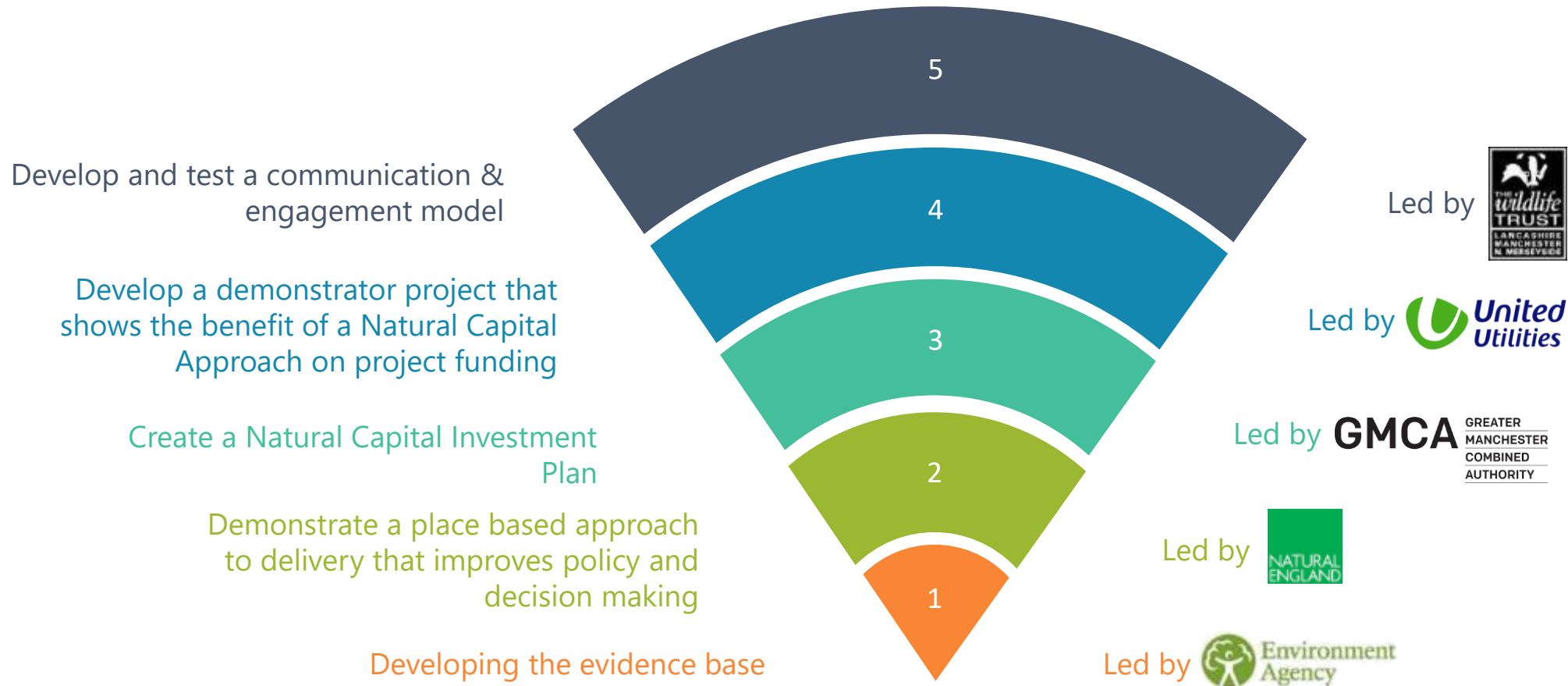
Partnerships and Projects



URBAN PIONEER DELIVERY GROUP



Creating a Natural Liveable Green City Region



Developing the Evidence Base

£1bn - total annual benefit



£372m



£264m



£56m



£74m



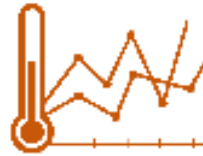
£3m



£44m



£38m



£5m



£3m

£9bn – total value of **avoided healthcare costs** (over 60 yrs)



Preventing **370** hospital admissions, avoiding **1,200** life year's lost



Approx. **44,000** buildings receive noise mitigation



135,000 people meet their physical activity guidelines, giving over **4,600** QALYs



Ecosystem Services Opportunity Mapping

A composite heat map for all ESS in the study area is generated, including:

Water quality;

Flood risk mitigation;

Recreation and leisure

(including physical and mental health);

Amenity;

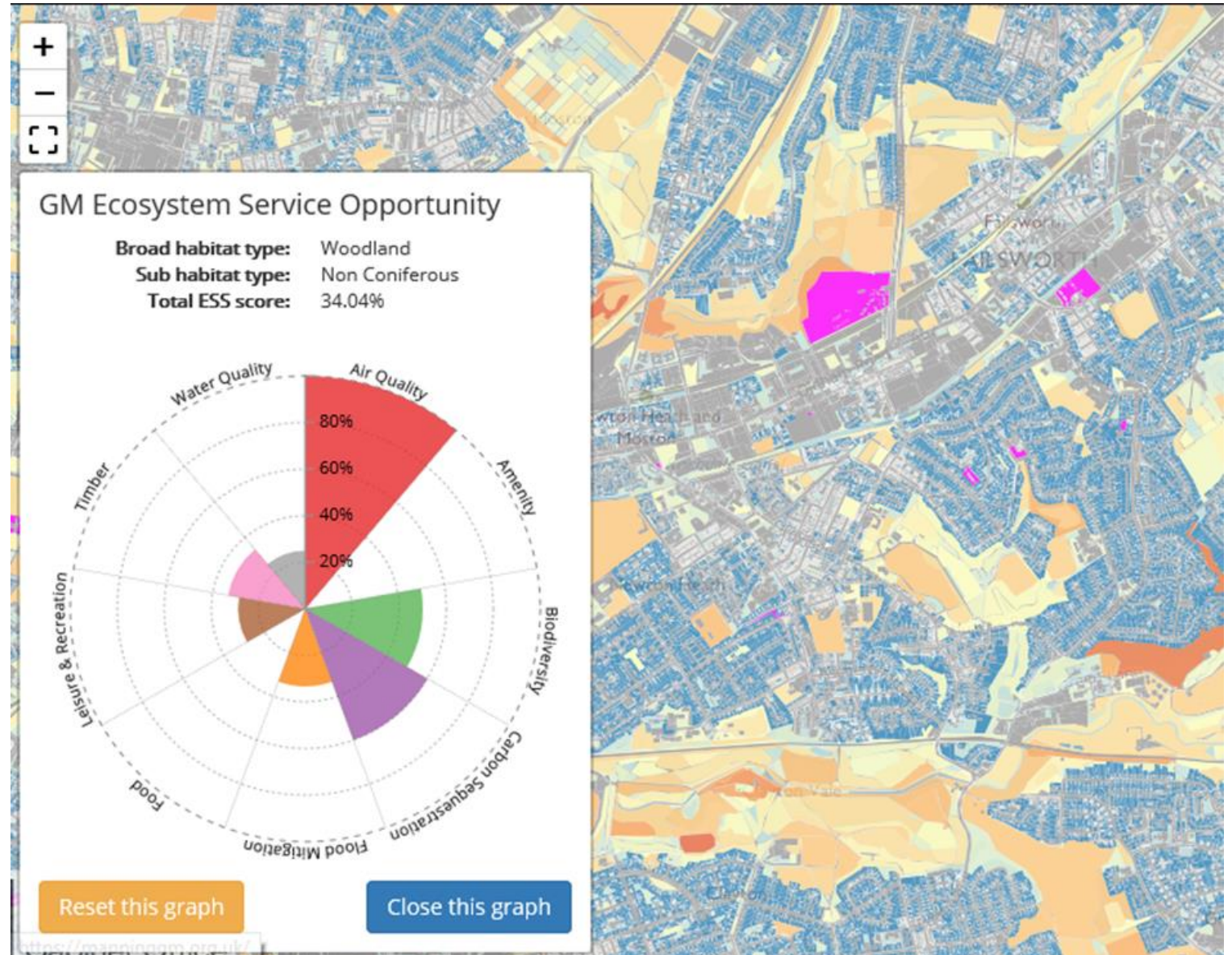
Carbon sequestration;

Biodiversity & ecological networks;

Air quality;

Food;

Timber.



Natural Capital Project Support

1. Project Development

- ■ Action Plans
- ■ Project Support



2. Capture Lessons Learned

- ■ Case Studies
- ■ Pilot Project Forum

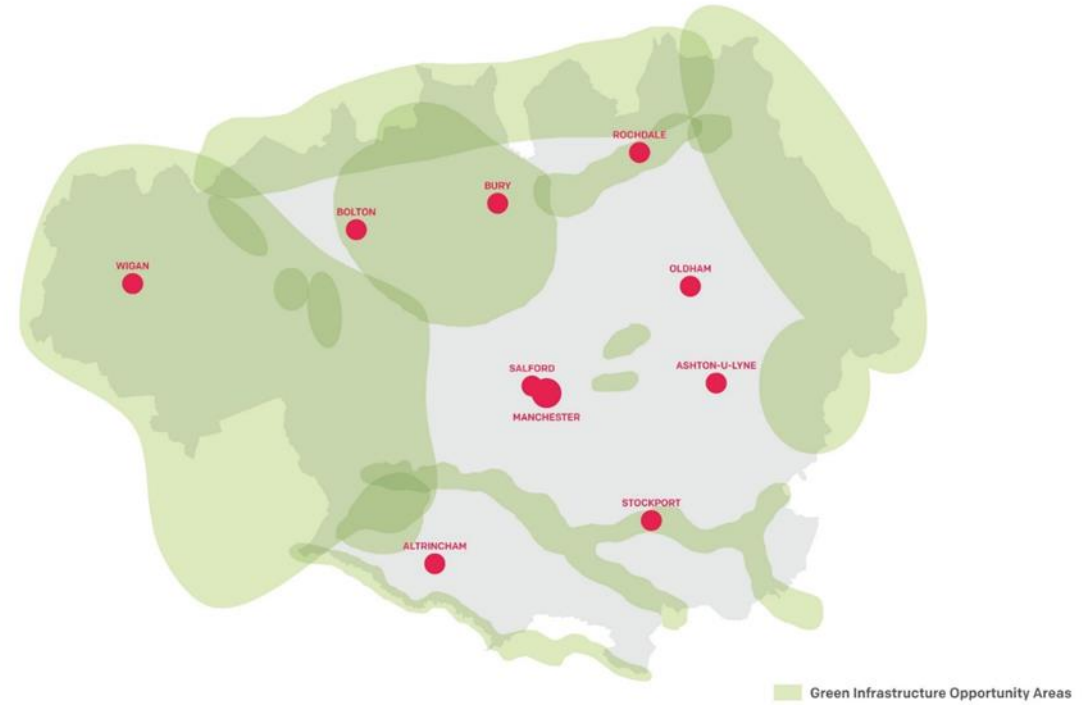


3. Dissemination Event

- ■ Executive Summary
- ■ Final Report

CHAPTER EIGHT

A GREENER GREATER MANCHESTER



- Greater Manchester Wetlands Nature Improvement Area
- Croal-Irwell Valley
- South Pennine Moors
- West Pennine Moors
- Mersey Valley
- Red Moss and Middle Brook Valley
- Hulton
- Cutacre Country Park
- Lower Medlock Valley
- Moston Brook Corridor
- Roch Valley
- Hollingworth Lake and Surrounds and Carrington (Trafford)



Natural Capital Investment Plan

The investment plan aims to support the agreed vision of:

“A Greater Manchester where investments in natural capital enhance the long-term social, environmental, and economic health and wellbeing of its people and businesses.”

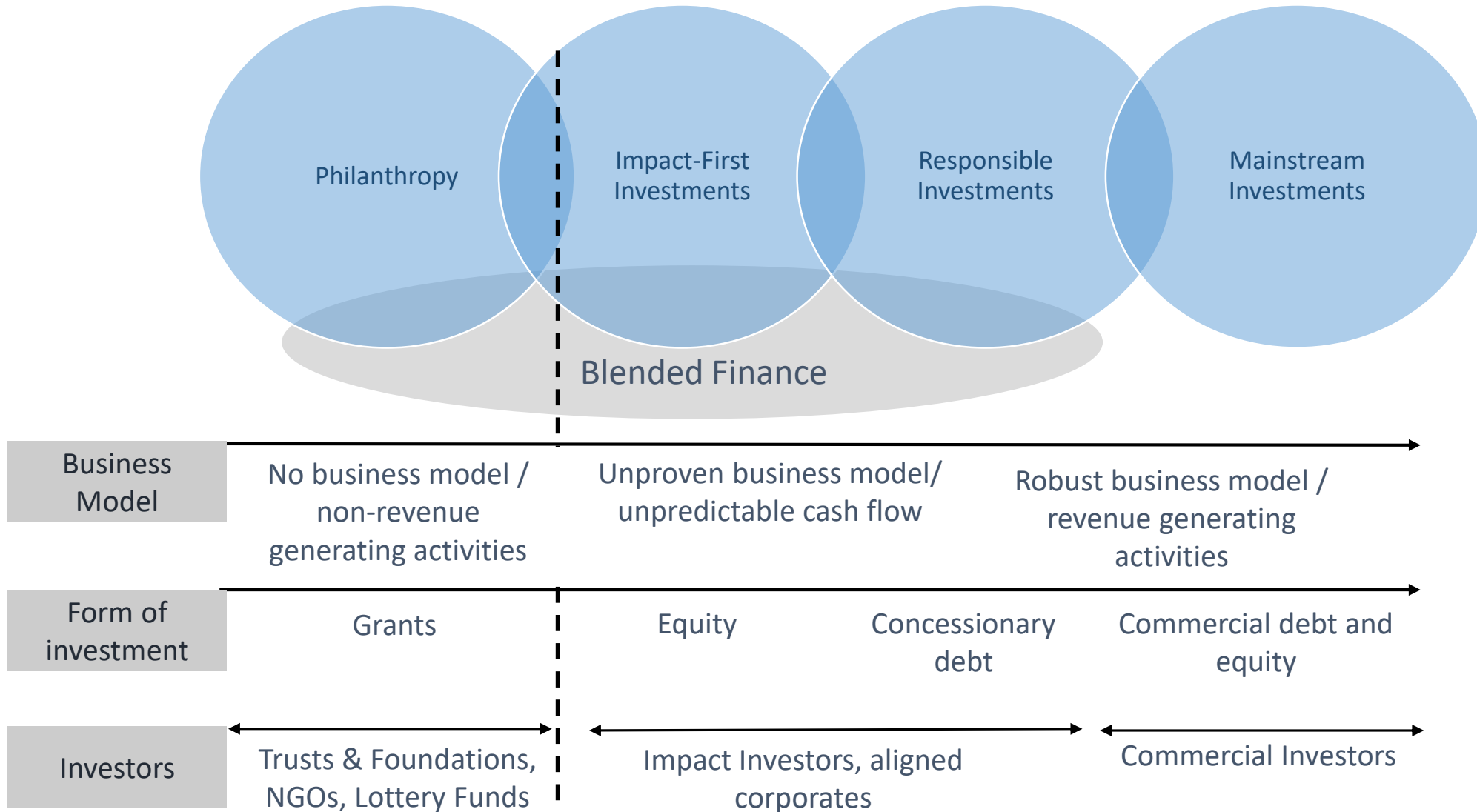
Investment in natural capital defined as:

“Funding that is intended to provide a return to the investor while also resulting in a positive impact on natural capital.”

- Returns are defined predominantly, although not exclusively, in financial terms.
- Public and third sectors still have an important role to play, as enablers and innovators.



Sources of capital in the natural capital investment market



Finance Models

Selected on the basis of: maturity of business case, capacity to generate revenue and investment, level of local support and alignment with natural capital objectives:

Place-Based Portfolio Models, could be created by leasing green and blue infrastructure to a Trust which could then exploit new revenue opportunities.

Habitat and Carbon Banking sell credits from additional actions that increase biodiversity or stored carbon to organisations to compensate for their unavoidable impacts.

Sustainable Drainage Systems (SuDS) have an established revenue mechanism, through a reduced water company drainage connection charge for developments.



Sustainable Drainage Systems (SuDS)

Sustainable drainage schemes could save up to £1.75m a year for education budgets if all the City's 1,300 schools adopted similar measures.

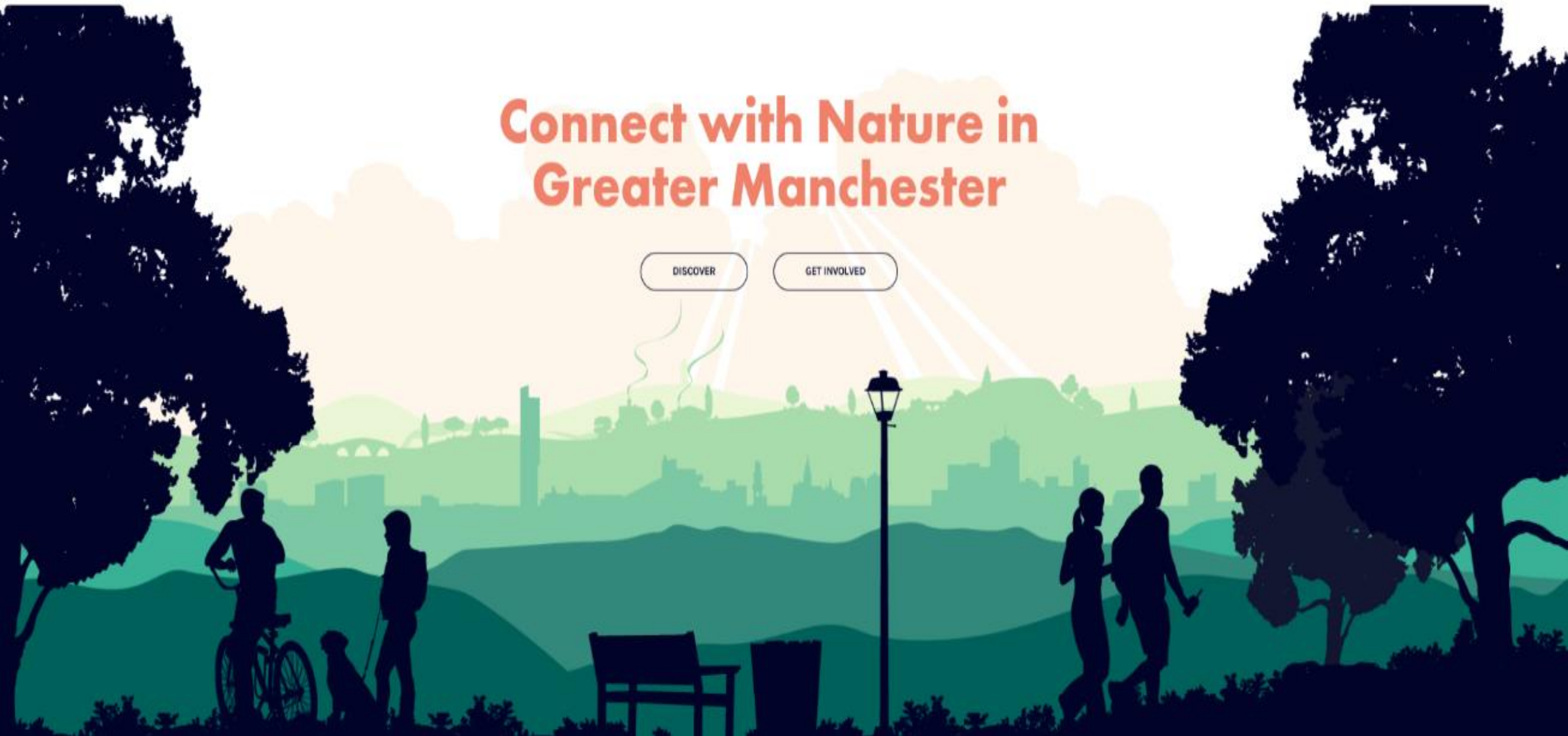




Connect with Nature in Greater Manchester

DISCOVER

GET INVOLVED



What Next?

- Managing our land sustainably, including planting 1m trees by 2024
- Managing our water and its environment sustainably



- Achieving a net gain in biodiversity for new development
- Increasing investment into our natural environment
- Increasing engagement with our natural environment



Useful links

GM Natural Capital Investment Plan

<https://www.greatermanchester-ca.gov.uk/what-we-do/environment/natural-capital/>

GM Natural Capital Accounts

<https://naturegreatermanchester.co.uk/resource/gm-natural-capital-accounts/>

GM Ecosystem Services Mapping Tool

https://mappinggm.org.uk/gmodin/?lyrs=v_tep_ecosystem_services_2019#os_maps_light/10/53.5069/-2.3201

Irwell Natural Capital Accounts and ESS Opportunity Mapping

<https://naturalcourse.co.uk/uploads/2018/07/Final-IMC-Natural-Capital-Account-and-ESS-Opportunity-Mapping-Report-6635.040.2.pdf>

Natural Capital Project Support

<https://naturalcourse.co.uk/uploads/2019/04/Natural-Capital-Project-Support-Final-Report-NC.pdf>

Nature Greater Manchester website

<https://naturegreatermanchester.co.uk/>

Thank you

For more information:

krista.patrick@greatermanchester-ca.gov.uk

- <https://naturegreatermanchester.co.uk/project/greater-manchester-natural-capital-investment-plan/>
- <http://ontheplatform.org.uk/>
- <https://www.greatermanchester-ca.gov.uk/what-we-do/environment/>
- <https://naturalcourse.co.uk/>

