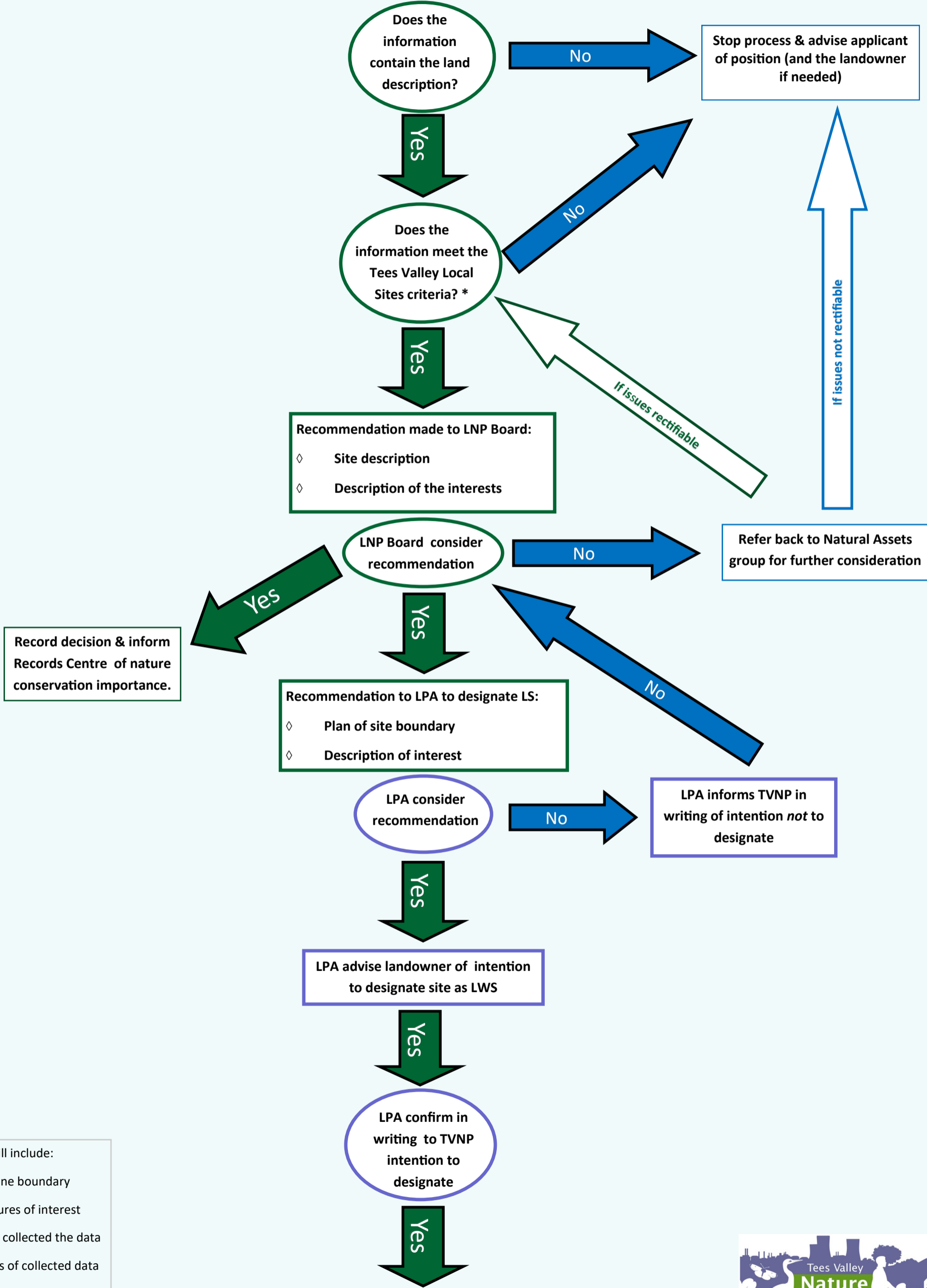


Tees Valley Local Wildlife/Geological Sites Evaluation, Selection & Designation Process 2018

LNP- Natural Assets Group receive a nomination for LWS/LGS consideration



- * Criteria will include:
- ◇ Redline boundary
 - ◇ Features of interest
 - ◇ Who collected the data
 - ◇ Dates of collected data
 - ◇ Landowner consent needed/granted

New LWS designated. Inform landowner. Update local plan

