



Developing a Habitat Framework for the Tees Estuary



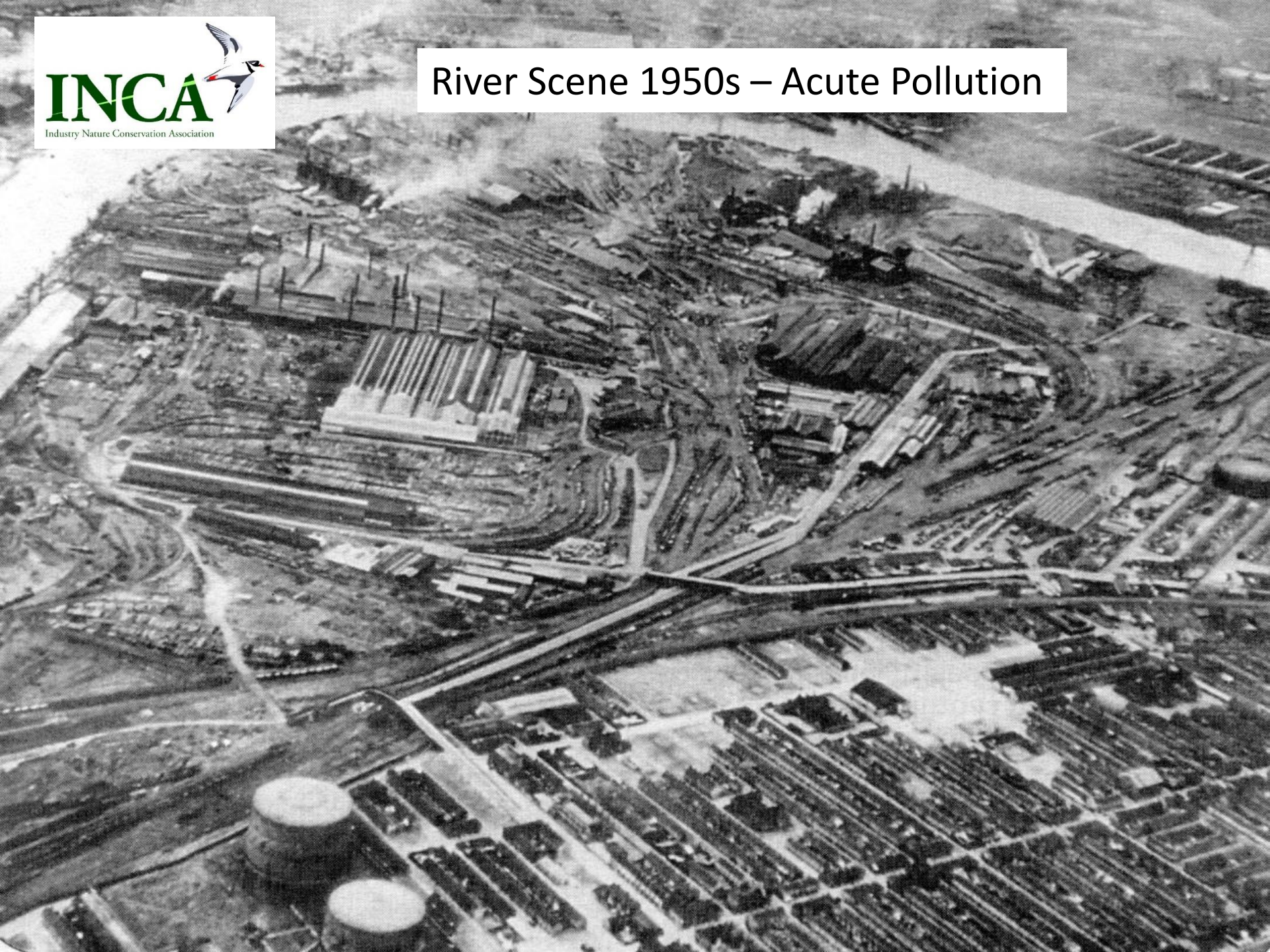


INCA

Industry Nature Conservation Association

- **Founded in 1989**
- **INCA's aim** - to avoid conflict and build trust between industrial developers and conservationists.
- **The INCA model** - A member-funded, non profit-making organisation, supplying ecological advice to its membership.
- **Membership** - 30 Businesses; 6 Nature Conservation Organisations; 3 Regulators / Local Authorities

River Scene 1950s – Acute Pollution



Today – Nature & Industry Successfully Co-exist



SPA - Designated Area in the Tees Estuary

Teesmouth & Cleveland Coast SPA & Ramsar site: designated for its internationally important overwintering waterbird assemblage of 20,000 birds



Numbers of some species have increased, *e.g.* Wigeon, Common Tern, colonisation of Avocet.

Overwintering populations of some species have declined, *e.g.* Knot, Dunlin, Shelduck.

Important Intertidal Areas on the Industrial Tees



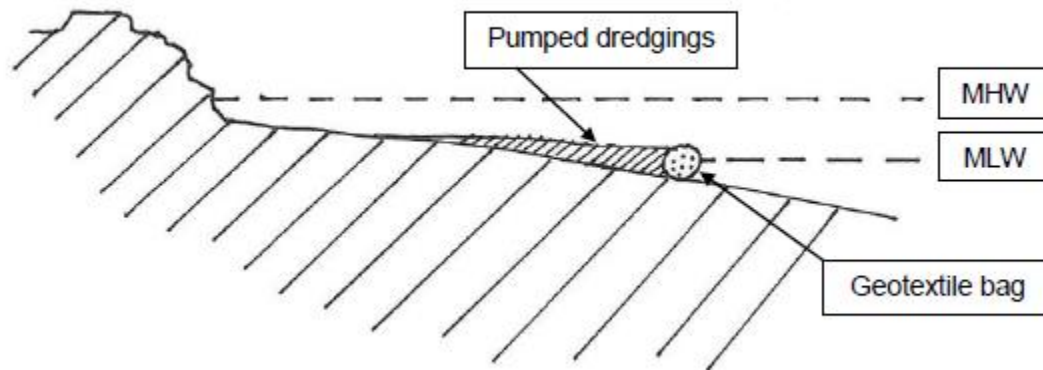
The Tees Estuary Partnership (TEP)

- A group of key stakeholder organisations (industry, regulators, local authorities, conservation NGOs) formed in 2016 with a shared vision to meet the enhanced needs of all stakeholder groups in respect of Natural England's statutory review of the existing SPA boundary.
- INCA facilitated in-depth discussions with industry which led to a Memorandum of Understanding for the Tees, a process developed by Natural England. Will give industry confidence in existing operations existing but also simplifies the approach for aspirations.
- 3-Month consultation about SPA review will begin in summer 2017.

Habitat Framework – The Second Part of the TEP vision for the Tees

- What is it? Largely Environment Agency-funded. Relates to nature conservation and is an audit of possible areas for habitat enhancement / creation on the Tees, particularly focused on intertidal areas and waterbirds.
- Currently at concept level only, INCA has worked with 15 stakeholders along the river to gather information about suitable opportunities for habitat enhancement / creation at no obligation. Feasibility Reports produced.

Example Showing Possibility for Macro-level Habitat Creation



Implementation of the Habitat Framework

- Further stakeholder engagement is necessary to take to the next stage of implementation.
- Natural England is leading the definition of a process for 'Habitat Banking' which may also facilitate implementation of this process.
- Possible funding via a landscape level application to the Heritage Lottery Fund.

Thank you for your attention. Hopefully this has helped you to appreciate how the TEP is helping to achieve balance between the needs of industry and nature conservation in the Tees estuary.