

## **NORTH TEES NATURAL NETWORK (NTNN)**

**This revised MEMORANDUM OF UNDERSTANDING is made on the 12<sup>th</sup>  
September 2017**

### **BETWEEN THE FOLLOWING**

- 1. NATURAL ENGLAND**
- 2. ENVIRONMENT AGENCY**
- 3. TEES VALLEY COMBINED AUTHORITY**
- 4. HARTLEPOOL BOROUGH COUNCIL**
- 5. STOCKTON-ON-TEES BOROUGH COUNCIL**
- 6. RSPB SALTHOLME**
- 7. TEES VALLEY WILDLIFE TRUST**
- 8. INCA**
- 9. TEESIDE ENVIRONMENT TRUST**
- 10. TEESMOUTH FIELD CENTRE**
- 11. GROUNDWORK NE & CUMBRIA**

#### **1. BACKGROUND and PURPOSE**

- A. The area of interest to the Network lies on the north bank of the Tees estuary, from Port Clarence in the south to Seaton Carew in the north, and extending as far inland as Billingham and the A689 from Wolviston to Hartlepool. This Area is delineated in the map attached to Schedule 1.
- B. The purpose of the NTNN is to ensure the long-term future of the internationally, nationally, regionally and locally important environmental resources of the NTNN area (see appended map) in parallel whilst recognising the sustainable development of its industrial and economic assets. This will be done through co-ordinated enhancement of the management of a number of sites centred around the RSPB Saltholme Reserve and Teesmouth National Nature Reserve to provide environmental, economic and social benefits for the area. This initiative will help to maximise the economic benefits linked to these unique environmental assets by developing a coordinated natural network which attracts visitors and creates an attractive business environment for new and existing companies. The NTNN will work with industrialists, infrastructure providers and funders in order to facilitate projects that are undertaken in pursuit of these objectives.
- C. This Memorandum of Understanding sets out the general principles which shall govern the relationship between the NTNN Partners.
- D. This Memorandum is not intended to create a binding legal obligation between the NTNN Partners.

## **2. VISION**

*"Wildlife and Industry in Harmony"*

*The NTNN will showcase how an internationally important location for wildlife can be enhanced in harmony with industry thereby supporting the natural, social and economic prosperity of the Tees Valley.*

*Coordinated management of a number of sites in varied ownerships will deliver nationally-significant habitats teeming with breeding and wintering birds alongside a range of other wildlife.*

*Integrated access and improved visitor facilities and interpretation will provide people with wildlife experiences without compromising the security of nearby industry and at the same time ensuring sensitive wildlife is protected.*

*The range of attractions such as avocets, orchids, otters and seals will increase numbers of visitors to the Tees Valley, especially from nature-based tourism, thereby delivering economic and social benefits.*

*The NTNN area will also be a significant resource for the local community, providing opportunities for recreation and education and contributing to improved health and well-being.*

*Views across the area from restored landfill sites will show how industry and wildlife can co-exist and flourish, reconnecting the people of Teesside with the unique landscape on their doorstep.*

## **3. THE FIVE STRATEGIC OBJECTIVES**

1. **BIODIVERSITY:** To enhance biodiversity through complementary and improved management of constituent sites.
2. **ECONOMIC:** To support sustainable economic growth, including tourism and business development, through improving the reputation and image of the Tees Valley.
3. **RECREATION:** To provide opportunities for enjoying and discovering wildlife and the other heritage of the NTNN.
4. **ACCESS:** To improve access opportunities, including Coastal Access, through joint working and collaborative marketing.
5. **EDUCATION:** To enhance educational facilities and opportunities.

## **4. GOVERNANCE**

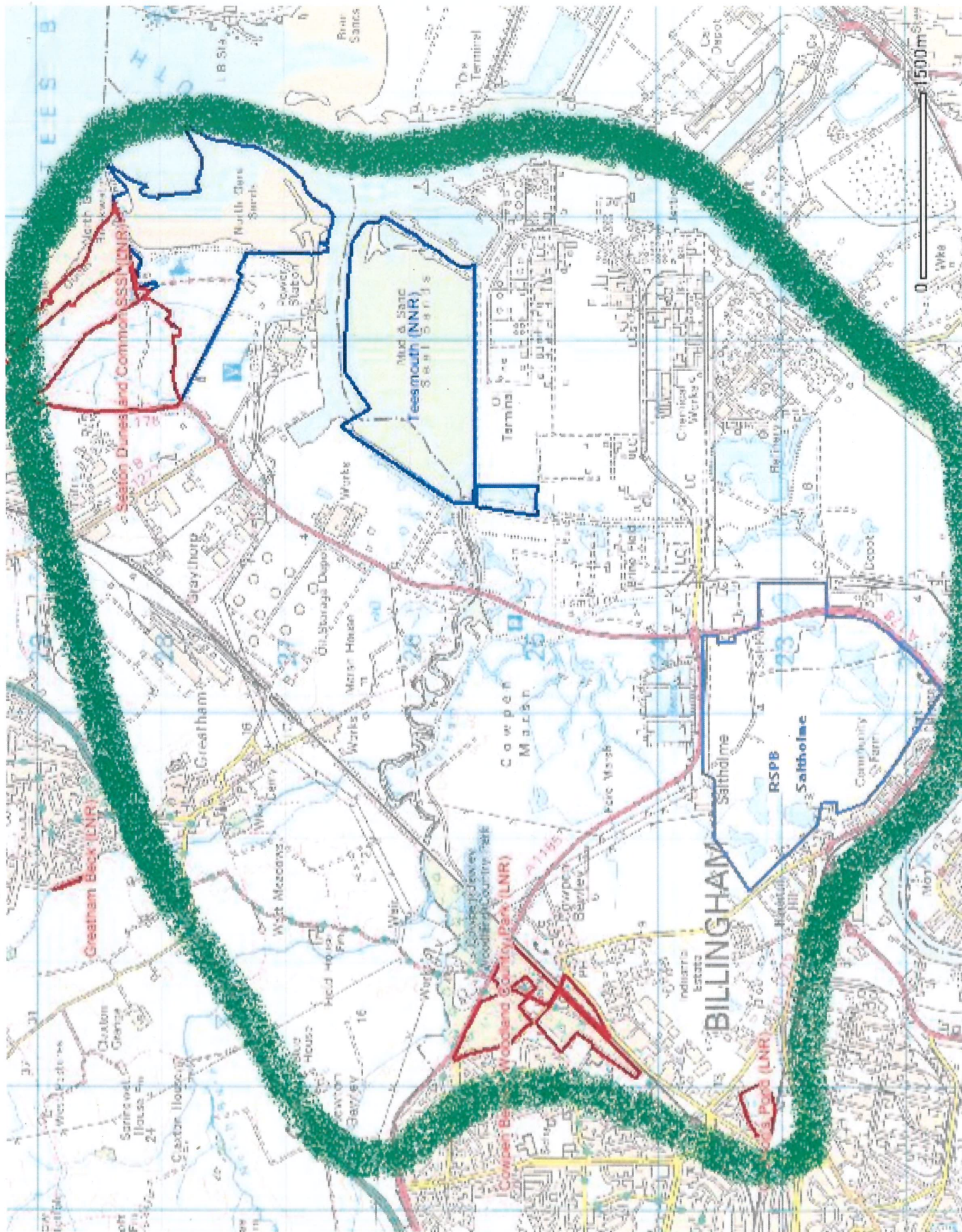
1. The NTNN partnership will meet at least three times a year and will direct the collaboration between partners through these meetings.
2. The meetings will be chaired by one of the NTNN partners on an agreed annual rotation.

3. The secretariat for the meetings will be provided by one of the NTNN partners on an agreed annual rotation.
4. Any meeting with at least 50% of the partners in attendance shall be deemed quorate.
5. The NTNN partnership will undertake an annual review of its strategic objectives.
6. The NTNN partnership may be dissolved by the majority of the NTNN partners voting to that end at any quorate meeting.
7. An action plan will be agreed and updated annually.

## **5 DELIVERY**

Examples of collaboration within the NTNN area:

- Creation of a seal viewing watch-point at Greatham Creek that had 20,000 visitors each year.
- Involvement and support for the Environment Agency Greatham South FAS.
- A workshop leading to direct support for the England Coast Path route and the River Tees Rediscovered Landscape Partnership North Tees Trail.



Section Dunes and Common SSSI (LNR)

Mud & Sand Teesmouth NNR

Greattham Beck (LNR)

Woodland Country Park (LNR)

Saltholme RSPB

Saltholme Community Farm

BILLINGHAM

1500m