

Natural Assets Theme

- Tees Valley Biodiversity
- Protected Sites in the Tees Valley
- Green Infrastructure
- Food and Fuel Resources



Tees Valley Biodiversity

(Priorities for action – the strategy to 2020)

Tees Valley Biodiversity Partnership (TVBP)
(Local Biodiversity Action Plan (BAP))

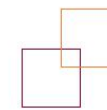


Tees Valley Nature Partnership

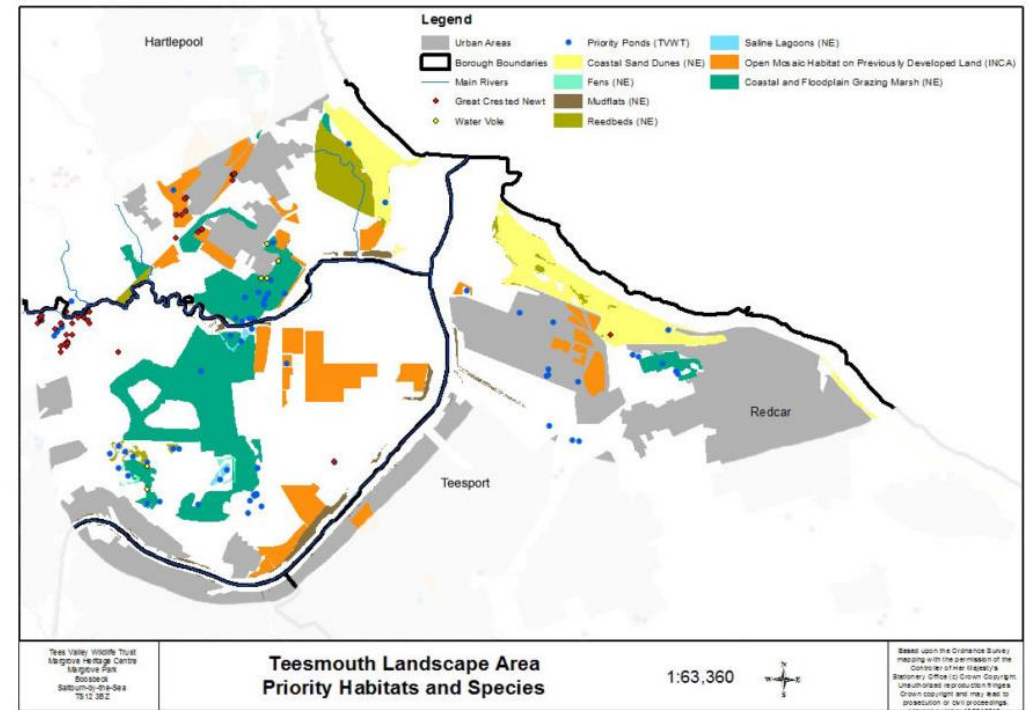
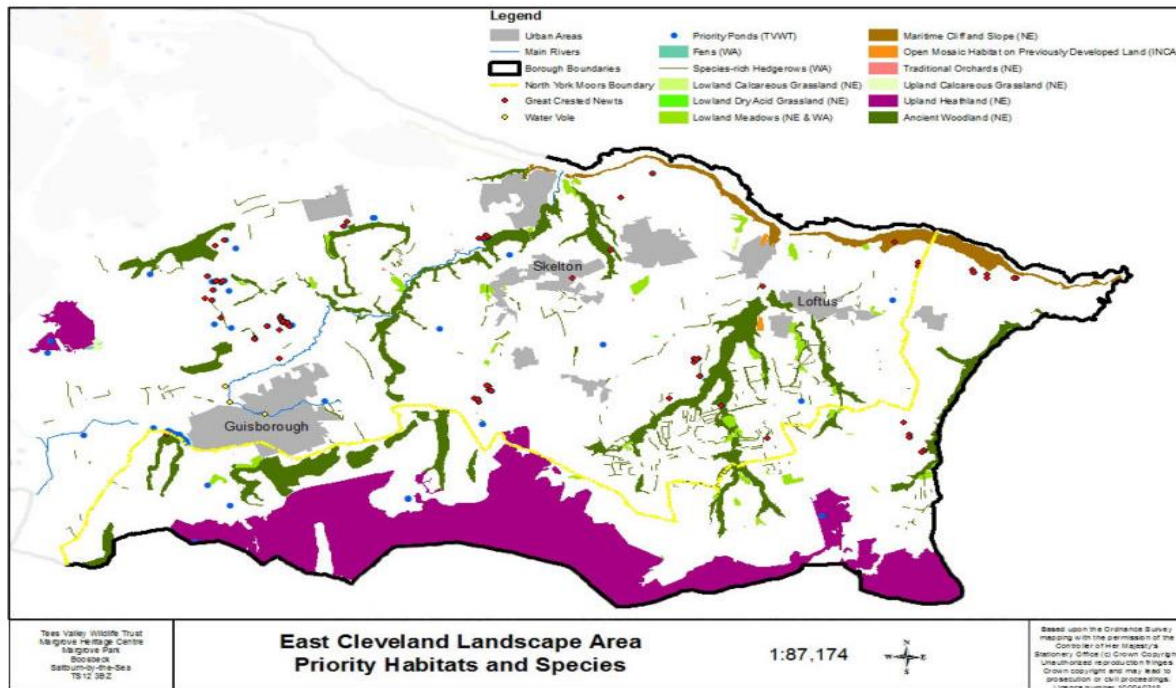
- Integrated large-scale approach to conservation on land and at sea
- Putting people at the heart of biodiversity policy
- Reducing environmental pressures
- Improving our knowledge

[National Biodiversity Gateway](#). Use it to explore UK biodiversity data, as contributed by participating data providers

Biodiversity 2020:
A strategy for England's wildlife
and ecosystem services



Priority Habitats and Species



<http://teesvalleynaturepartnership.org.uk/landscape-areas-priority-habitats-species/>

The National Biodiversity Network

Explore Your Area

Enter your location or address:

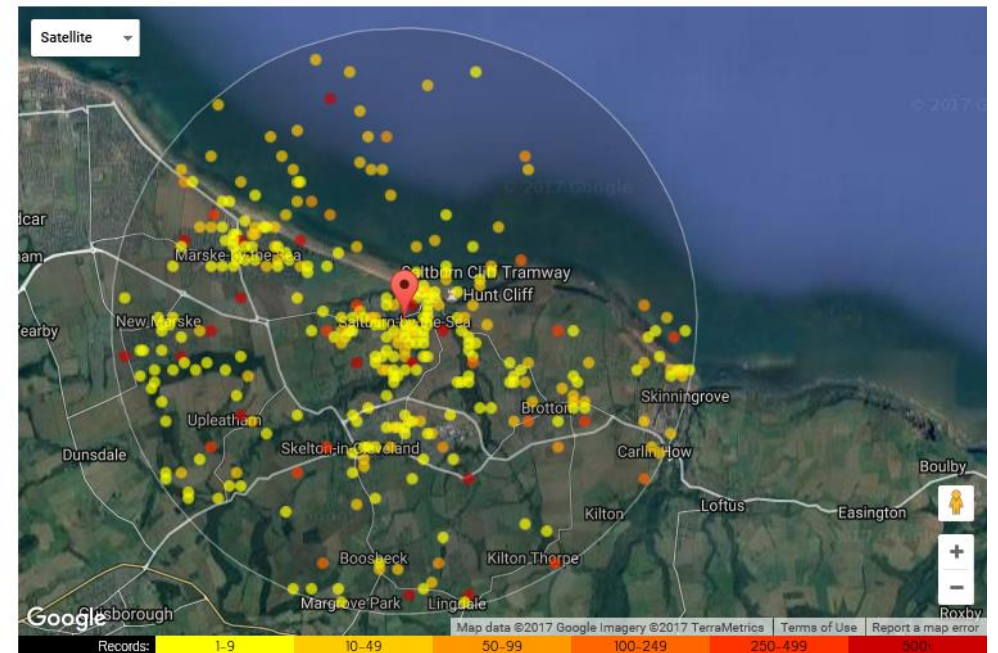
 Search

E.g. a street address, place name, postcode, GPS coordinates (as lat, long) or Ordnance survey grid reference

Showing records for: 26 Eden St, Saltburn-by-the-Sea TS12 1JZ, UK

Display records in a km radius

Group	Species	Species : Common Name	Records
All Species	1339		
Animals	810	1. <i>Abietinaria abietina</i>	2
Mammals	24	2. <i>Abra alba</i>	12
Birds	200	3. <i>Abra prismatica</i>	16
Reptiles	2	4. <i>Abraxas sylvata</i> : Clouded Magpie	2
Amphibians	5	5. <i>Abrostola tripartita</i> : Spectacle	1
Fish	14	6. <i>Acanthinula aculeata</i> : Prickly Snail	10
Molluscs	139	7. <i>Acanthis cabaret</i> : Lesser Redpoll	26
Arthropods	350	8. <i>Acanthocardia echinata</i> : Prickly Cockle	9
Crustaceans	46	9. <i>Acarospora fuscata</i>	6
Insects	256	10. <i>Acaulon muticum</i> : Rounded Pygmy-moss	1
Plants	197	11. <i>Accipiter gentilis</i> : Goshawk	1
Bryophytes	168	12. <i>Accipiter nisus</i> : Sparrowhawk	1263
Gymnosperms	0	13. <i>Acilius sulcatus</i>	1
FernsAndAllies	0	14. <i>Acrocephalus schoenobaenus</i> : Sedge Warbler	8
Angiosperms	0	15. <i>Acrocephalus scirpaceus</i> : Reed Warbler	3
Monocots	0	16. <i>Actinia equina</i> : Beadlet anemone	6
Dicots	0	17. <i>Actitis hypoleucos</i> : Common Sandpiper	7
Fungi	317	18. <i>Adalia bipunctata</i> : 2-spot Ladybird	3
Chromista	12	19. <i>Adalia decempunctata</i> : 10-spot Ladybird	3
Protozoa	3	20. <i>Aegithalos caudatus</i> : Long-Tailed Tit	1000
Bacteria	0	21. <i>Aegopinella nitidula</i> : Smooth Glass Snail	28
Algae	37	22. <i>Aegopinella pura</i> : Clear Glass Snail	20
		23. <i>Aeshna cyanea</i> : Southern Aeshna	5

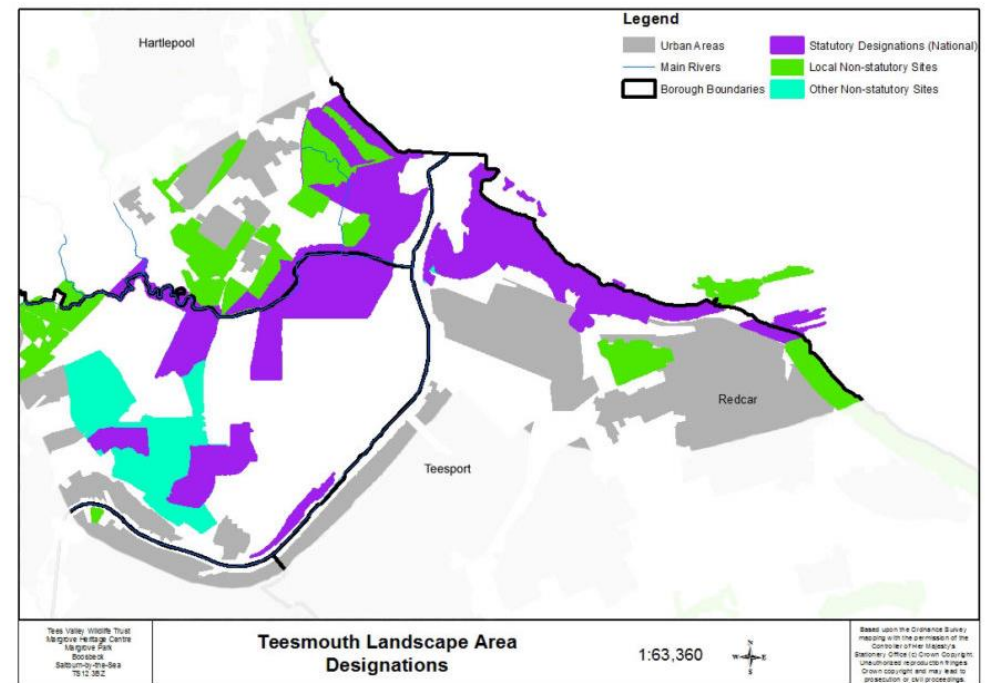
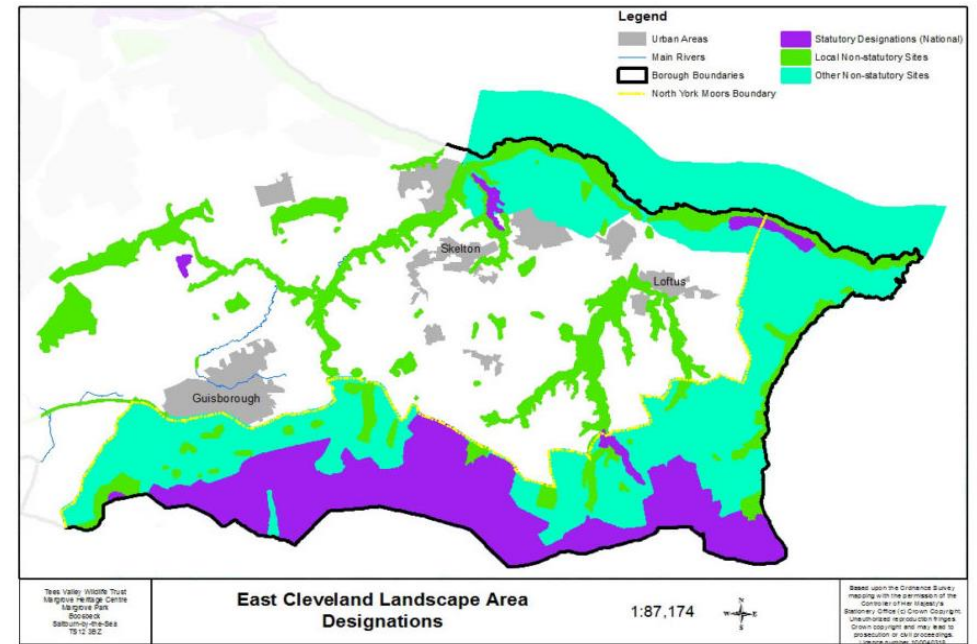


Tips: you can fine-tune the location of the area by dragging the red marker icon

https://records.nbnatlas.org/explore/your-area#54.58156|-0.9751340000000255|12|ALL_SPECIES

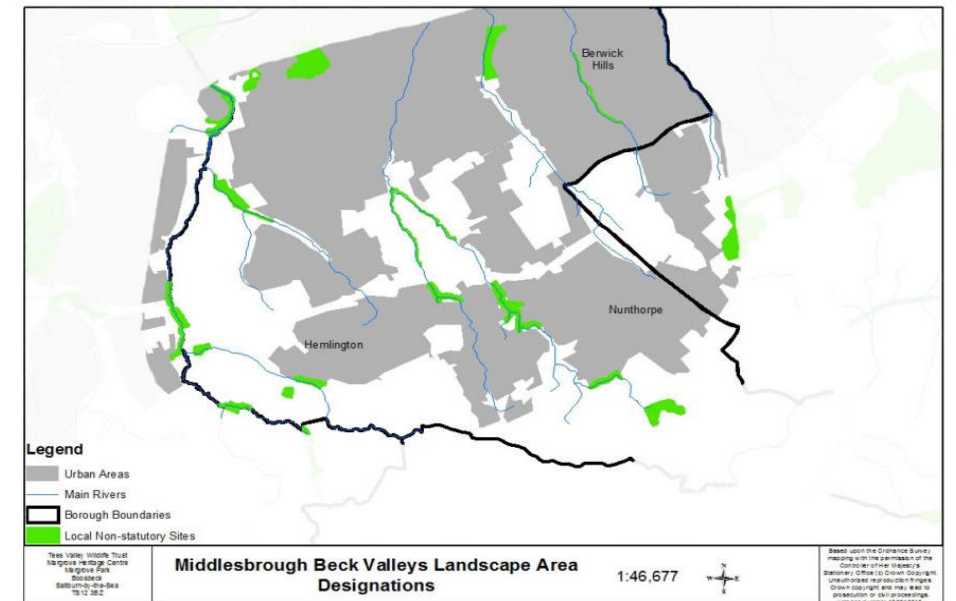
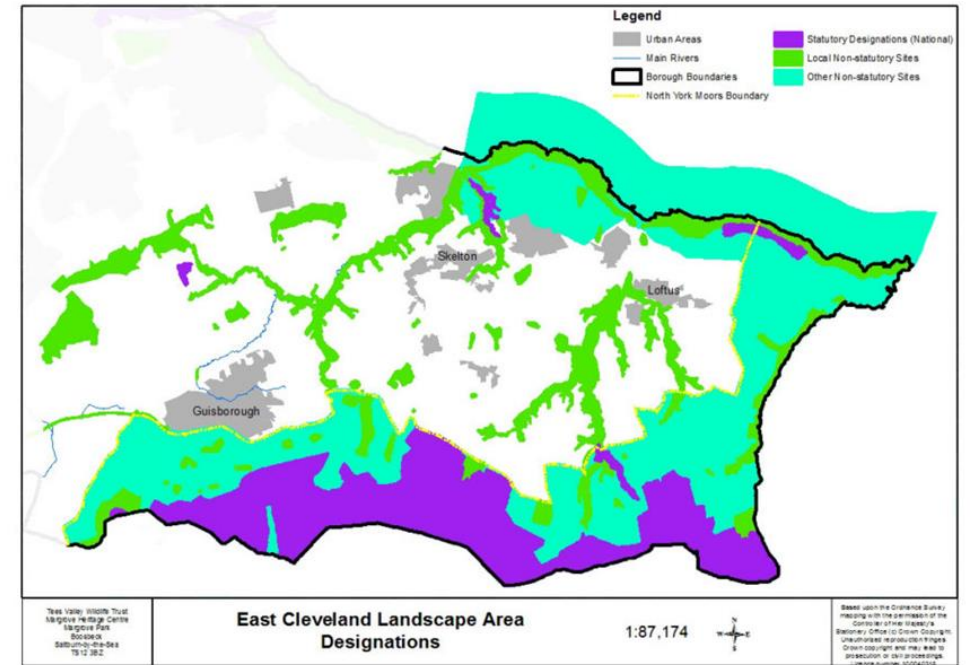
Protected sites in the Tees Valley

- Site designations that protect the UK's natural heritage through statute, within the Tees Valley we have over 30 sites and they are:
- Special Areas of Conservation (SAC)
e.g. North York Moors
- Special Protection Area (SPA)
e.g. Teesmouth and Cleveland Coast
- Ramsar site (Wetland of international importance)
e.g. Teesmouth and Cleveland Coast
- Site of Special Scientific Interest (SSSI)
e.g. Hartlepool submerged forest



Protected sites in the Tees Valley

- Local non statutory designated sites of which we have approaching 280 are:
- Local Wildlife Sites (LWS) e.g. Wynyard Woodland Park in Stockton
- Local Geological Sites (LGS) e.g. Guisborough Forest in Redcar and Cleveland
- Heritage Coast
- Important Bird Area (IBA)
- Local Nature Reserves e.g. Linthorpe Cemetery in Middlesbrough and Drinkfield Marsh in Darlington
- NGO properties (usually nature reserves) e.g. Saltholm (RSPB), Portrack Marsh (Tees Valley Wildlife Trust)



Green Infrastructure

- Benefits of a well planned and managed GI include:
- Improved image: helping to attract businesses and inward investment
- Greater sense of place and pride in the local area
- Mitigates for the effects of climate change, e.g. flood alleviation, carbon storage, cooling urban heat islands
- Increased biodiversity by providing habitats for wildlife
- Health and wellbeing benefits through places for outdoor relaxation, play, recreation and exercise
- Encourages active and sustainable travel by providing cycle and walking routes
- Increased local food and renewable energy production
- Reduced crime and antisocial behaviour.



Food and Fuel Resources

- The balance between the need for increased food production and an improved natural environment, which future food production depends on, is a delicate one.
- Environmental Stewardship Schemes, administered by Natural England, support sustainable land management practices
- About three-quarters of the Tees Valley land area is rural.
- In 2013 there were 136 higher and entry level environmental stewardship schemes valued at over six million pounds.



Workshops and Presentations

- Honey bees and pollination: threats and Opportunities
- Tackling Invasive species on the Tees
- Increasing role of volunteers and friends groups in the management of green spaces issues challenges and possibilities
- TV wide Green infrastructure planning and application.

