

TVNP Board Meeting Agenda

10 am-12.30 pm, 16 April 2013

Groundwork Offices, 123 Victoria Road Darlington DL1 5JH

	10.00 - 10.05	Welcome and introductions
B/01.02.13	10.05 - 10.15	Matters arising from minutes
B/02.02.13	10.15 - 10.30	Report of TVNP business

(paper B/02.02.13)

Update on the work of the Partnership Jan- March 2013 by the TVNP Development Manager.

B/03.02.13	10.30 – 11.00	Vision document
-------------------	----------------------	------------------------

(paper B/03.02.13)

A Discussion of the draft TVNP Vision Document; its format content and maximising its use as a communication tool.

B/04.02.13	11.00 -11.15	Terms of reference
-------------------	---------------------	---------------------------

(paper B/04.02.13)

A Terms of Reference for the TVNP was drawn up in 2012 as part of the LNP application process by a task and finish group, which has yet to be formalised. This is an opportunity to discuss and adopt or amend this document which will be placed in the TVNP website once approved by the Board.

Refreshment break

B/05.02.13	11.30 -11.45	Development of work programme
-------------------	---------------------	--------------------------------------

An opportunity to input into developing a short and medium term work programme for the Partnership

B/06.02.13	11.45 – 12.00	EU Growth Programme
-------------------	----------------------	----------------------------

(letter B/06.02.13)

Stephen will provide a background on the programme to facilitate a discussion what role it can play in engaging with the Tees Valley LEP in the Development of Tees Valley EU Investment Strategy and consideration of how this can be achieved.

B/07.02.13	12.00 -12.15	Heritage Lottery Funded partnership projects in development
-------------------	---------------------	--

(paper B/07.02.13)

An update of the Tees Valley natural heritage projects that are in the process of development/application with the Heritage Lottery Fund.

B/08.02.13	12.15- 12.20	Chair and agenda planning for next meeting
B/09.02.13	12.30- 12.30	AOB

Minutes of the Tees Valley Nature Partnership Board Meeting

Held on 16 April 2013

Present: Chris Watson, Groundwork North East (environment sector rep), Damien Wilson, Hartlepool Borough Council (local authority rep), Stephen Catchpole, Tees Valley Unlimited (economic sector rep), Jeremy Garside, Tees Valley Wildlife Trust (accountable body rep), Richard Hall, Natural England (Defra family rep), Doff Pollard, Tees Valley Rural Community Council, (community sector rep), Susan Antrobus (TVNP Development Manger).

Apologies: John Mann, Teesside Environmental Trust (environmental sector rep), Ivor Crowther, Heritage Lottery Fund (funding sector rep), Laurie Norris, NFU (agricultural/rural affairs rep).

B/01.02.13 Matters arising from minutes

No matters arising

B/02.02.13 Report of TVNP business (paper B/02.02.13)

A summary update on the work of the Partnership Jan- March 2013 was provided by Susan Antrobus. This included updates on the recent national ministerial LNP event, TV Rural Summit, TV Natural Network and Opportunity Mapping project, T V Growth ready project, TV Local Sites Partnership, TV Wild Green Spaces project and the York University Ecosystem Services research. It was also noted that Stephen Catchpole and Susan Antrobus had taken part in telephone interviews with consultants working for Defra for a Tees Valley case study to demonstrate an example successful working between LNPs and LEPs as part of an evaluation study on LNPs being commissioned by Defra.

B/03.02.13 Vision document (paper B/03.02.13)

The draft text prepared by a task and finish group of the Management group was welcomed as being clear and concise. A slight amendment to the vision statement was suggested and agreed to place the words 'to create' with 'sustains' to be more positive, so that it reads;

A rich and healthy natural environment in the Tees Valley that sustains a vibrant place to work, live and learn.

The draft ecosystem services interactive diagram that will form part of the online vision document was also welcomed. It was suggested that, in the text that is being written to accompany this, that this should be backed by some Tees Valley facts and figures/examples that demonstrate the value to other sectors to demonstrate the wider importance of a quality natural environment. It was agreed that a short description of the Tees Valley's natural environment be added to give context to the document. This complements the approach taken in the LEPs Statement of Ambition.

B/04.02.13 Terms of reference (paper B/04.02.13)

A Terms of Reference for the TVNP was drawn up in 2012 as part of the LNP application process which has yet to be formalised. This was approved by the board with the following minor amendments;

1. Under accountable body add 'managing' in addition to employing staff so that it reads;
*Responsibility for employing any **managing** any staff to carry out the coordination of the Partnership.*

2. Amend the text so that it makes reference to a rotating chair, which was agreed at the last meeting.

3. Also amend text to read 'Environment Sector' instead of 'Environmental organisations or charities'.

There was a discussion on taking forward filling the other sectoral places on the board. Sue Antrobus is coordinating the production of a sector specific document on health and wellbeing to raise awareness of the TVNP and links with health and wellbeing agendas.

Action: DW to explore tourism sector with tourism/countryside access colleagues in the Tees Valley local authorities.

B/05.02.13 Development of work programme

Susan Antrobus presented ideas for developing a work programme for the partnership under four key themes of;

1. Championing the role of natural environment
2. Clear knowledgeable voice for natural environment
3. Opportunities for people to experience access and enjoy natural environment
4. Partnership working for an improved natural environment

Under these themes the following work is currently being undertaken;

1. Championing the role of natural environment

- Feed into Tees Valley strategies/policies and plans
 - Local plans (NPPF) (collate list of plans/ dates and coordinate responses through planning sub group)
 - TV EU Growth fund- network with TVU
- Increase understanding of the importance of natural environment to other sectors
 - Communication plan to inform and plan this work
 - vision document (sector specific communication tools)

2. Clear knowledgeable voice for natural environment

- Nature network mapping-identify opportunities and priorities (feeds into championing role)
- Coordinated ecological surveys, gathering and accessing of ecological surveys to retain up to date ecological knowledge
- Growth Ready project (EA led)

3. Partnership working for an improved natural environment

- Improving condition of Local Sites (Local Sites Group)
- Seeking opportunities for enhancing ecological networks

4. Opportunities for people to experience access and enjoy natural environment

- Feed into wildlife rich green infrastructure development and delivery- support work of LAs
- Partnership working to support local communities - project development e.g. River Tees Rediscovered, North Tees Goes Wild, NTNN, TV Wild Green Spaces

The board considered that the four elements/work themes were the correct ones and met the aims of the partnership. It was considered that the development of a work programme needed to be based on a more long term strategic plan. In particular for an improved natural environment- what do we envisage that will look like? What will be the wider benefits to people and economy? What needs to be done to achieve this? What are the key drivers and opportunities for achieving this? Development of long term delivery

mechanisms? Ways of measuring success? It was suggested that the Management Group could develop this over the next 6 months, which should include wide consultation activity with a skilled facilitator.

Action: All board members to submit half of page on what they consider the key factors that the plan should address to SA

B/06.02.13 EU Growth Programme (letter B/06.02.13)

Stephen gave an update on the EU Growth Programme, which included guidance that the TVU received from Government the previous day. The TVU as the LEP will be leading the process in the Tees Valley. They are setting up a Tees Valley Investment Panel to which the TVNP will be invited to be a part. It was noted that David Tarttelin and Jeremy Garside were attending a briefing meeting with TVU the following day. The scope of the programme was discussed as well as the preparation of a Tees Valley Investment plan. The challenges of raising match funding was discussed. The programme will be focused on a small number of large initiatives, rather than numerous small ones. Although the funding schemes are not for natural environment projects there is a role for the TVNP in reviewing the environmental impact of the wider programme to maximise wildlife gain, the role of the natural environment in adding value and exploring environmental opportunities that relate to wealth creation, training and employment. The development of a long term work programme for the TVNP will assist the TVNP work at a strategic level with this programme.

B/07.02.13 Heritage Lottery Funded partnership projects in development

(paper B/07.02.13)

An update of the Tees Valley natural heritage projects that are in the process of development/application with the Heritage Lottery Fund for information as outlined in the accompanying paper.

B/08.02.13 Chair and agenda planning for next meeting

Damien Wilson volunteered to chair and host the next meeting at the Civic Centre, Hartlepool. This will be on 16 July at 10 am.

Chris Watson was thanked for chairing and hosting this meeting.



Board meeting paper B/02.02.13

Report of TVNP business and activity Jan - March 2013

1. Ministerial LNP event

An event for chairs of Local Nature Partnerships was held in London on 13th February. The TVNP was represented by David Tarttelin (Environment Agency). The aim of the event was to enable LNP's to share best practice, discuss implementation issues and celebrate success. The event was opened with a presentation by Chris de Grouchy, Deputy Director of EU and UK Biodiversity Policy Delivery. He outlined mechanisms of support for LNP's to assist them in engaging with partners.

This was followed by an open discussion forum and presentations on future European funding, Health and Wellbeing Boards, then parallel sessions on LNP's and strategic planning and the Government's response to the Independent Forestry Panel Review. Richard Benyon MP, Minister for Natural Environment, Water and Rural Affairs arrived and gave an outline of LNP's, making the following points;

- LNP's have a major role in delivering the NEWP
- They are part of a new approach for managing the environment in a strategic and integrated way
- Improving the environment is one of DEFRA's four priorities set out by the Secretary of State
- The support and engagement from LNP's is vital for delivering Lawton e.g. local determined NIAs
- The Town and Country Planning Regulations have been amended to give LNP's the same consultative role as the LEP's in strategic cross boundary planning
- We particularly want to encourage growth in the rural economy and it is vital that we integrate growth and the environment. LNP's could play an important role in this locally.

This was followed by short presentations by three LNP's, after which the Minister welcomed questions from the floor. A summary of the event and presentations has been posted on our TVNP website:

<http://teesvalleynaturepartnership.org.uk/2013/04/05/report-from-lnp-ministerial-event-2013/>

2. Tees Valley Rural Summit

The Tees Valley Rural Community Council (TVRCC) held its annual summit on 15th March at the newly refurbished Preston Hall Museum. This year the theme of the summit was environmental and provided an opportunity to introduce the work of the TVNP to rural community representatives and for the River Tees Rediscovered Landscape Partnership to carry out consultation as part of its project development. The event was well attended by town and parish council, members of community and voluntary organisations and local authority representatives. Feedback to TVRCC from participants was very positive, with presentations and workshops being well received.

3. Input into strategic documents and plans

The TVNP made a coordinated response to two draft documents in March. It provided comments on the Middlesbrough Local Development Framework Core Strategy and Regeneration DPD (Preferred Options) to Middlesbrough Council and Natural England's Tees Lowland National Character Area document. Preparing this input raised discussion in the Management Group on the need to establish procedures for TVNP responses on strategic

documents. A planning group; that is being established is tasked with developing some terms of reference. A programme for TVNP input onto strategic/ planning documents has been devised for the year ahead.

4. Natural Network and Opportunity Mapping

Phases one and two of the project were completed within the Natural England grant deadline of end of March. Considerable effort has been spent grappling with datasets from multiple sources and verifying data for accuracy and consistency to ensure that the project is based on the most accurate and up-to-date ecological data. This data on UK priority habitats and species has been used to propose five areas in the Tees Valley that are especially rich in biodiversity assets and networks which have been summarised in tables. Work is now being undertaken to create an e-document with this information which will also contain an analysis of opportunities for protecting, enhancing and extending the ecological networks. This is anticipated to be published in June 2013. This will be followed by Phase 3 which will include a full assessment of the ecological and geological assets of each local authority area, integrating locally important green infrastructure.

The metadata analysis has found that there is in most cases a robust ecological data in the Tees valley and it has also identified where data need and gaps exist, in addition to inaccuracies in the Natural England UK habitat layers that need correcting. GIS spreadsheets on brownfield habitats created by INCA which they have also into the DEFRA's new habitat inventory of 'Open Mosaic Habitat on Previously Developed land'.

5. Vision document

A draft vision document has been prepared by a talk and finish group for input from the board. This is covered by agenda item 3 (paper B/03.02.13).

6. Tees Valley Growth Ready Project

The TVNP are feeding into this new Environment Agency and Local Enterprise Partnership led initiative to develop 'evidence products' that will facilitate development with speed and confidence, while at the same time influencing developments to protect and enhance the environment. The project also involves mapping spatial growth priorities and overlaying these with DEFRA environmental information to identify potential areas of constraint and opportunity. While designed to support economic investment, the evidence and mapping exercise offers opportunities to maximise potential for biodiversity and natural environment improvement.

7. Local Sites

Local sites are defined areas with substantive nature conservation interest, either biological, geological or both. The TVNP has taken over the role as the Tees Valley Local Sites Partnership from the former Biodiversity Partnership and has established a sub group to carry out this role. These are principally the designation of sites, documenting management of sites and facilitating management of sites. The group which is local authority led, have established a terms of reference and a work programme to ensure in particular reporting by local Authorities on National Indicator 197, which records the proportion of Local Sites in their area that are in positive management. Five new Local Sites (four as a result of Natural England funded geological surveys carried out by the Tees Valley Regionally Important Geology and Geomorphology Sites group) have been ratified and the relevant local authorities advised. The Local Sites group has been tasked with scoping a timetable and cost a programme of resurvey work to enable the management group to explore funding opportunities.

8. Tees Valley's Wild Green Spaces

The Tees Valley Wildlife Trust submitted a stage 1 application for a Heritage Grant from HLF for this project in December 2012 on behalf of the TVNP, with the support of the Local Authority Directors of Place. This has been successful with a 9 month development period, starting in May 2013, for project development for a stage 2 application. The details of the project are covered by agenda item 7 (paper B/07.02/13).

9. Ecosystem Services Research Project

As part of the NERC (Natural Environment Research Council) Biodiversity and Ecosystem Services Sustainability programme, Piran White at the University of York is leading a major national DEFRA funded research project on Ecosystem Interactions. This project is exploring the policy implications of the interactions between ecosystems and other socio-economic systems in producing the important services from which society benefits. They have selected the Tees Valley as one of three pilot studies to assess the implications of alternative future scenarios for the delivery of multiple ecosystem benefits in this area. Anne-Louise Orange (Groundwork) attended a workshop in York and later this month the TVNP a day to introduce them to the areas diverse landscape character,

10. River Tees Rediscovered

This Groundwork led Landscape Partnership project is progressing well with its development phase for its second stage HLF Landscape Partnership programme. The development team has been engaging with partners to work up the project elements. This will be followed later in the year by the pulling together of a Landscape Conservation Action Plan, which will be the working document for the 5 year delivery phase.

11. Miscellaneous

Anne Gladwin (Middlesbrough Council) and Sue Antrobus gave a presentation on the work of the TVNP to the North East Regional Advisory Committee of the Forestry Commission. Jeremy Garside has been invited to the Tees Valley Local Authorities Directors of Place meeting on 8th May to report on progress of the Partnership. The Tees Valley is to feature as a mini-case study highlighting good communications between its LNP and LEP in a forthcoming DEFRA publication on the evaluation of LNPS.

Susan Antrobus 08 April 2013



Board meeting paper B/02.02.13

Development of a Vision document for the TVNP

1. Background

A vision document is an important tool for the TVNP. As a new partnership it should provide the rationale for its existence, the basis for action, the direction in which it goes, the glue to bind partners together and the marker for measuring success. Whilst establishing the scope and priority of the partnership. It also needs to be flexible to respond to changing policy drivers and development of the partnership. The vision document provide the basis for the strategic planning of the work of the Partnership, cover ingobjectives, finance and communication plans timetabling of activity, outputs, monitoring and evaluation.

2. Format of TVNP vision document

A task and finish group was set up to develop a draft, working on the recommendation of the Board (24 Jan 2013) that this should be short, succinct and straightforward.

The purpose of the TVNP vision would be twofold;

- Provide a clear focus for the Partnership enabling it to set priorities
- Act as a communication tool with other sectors to promote the value of a high quality natural environment and the role of the TVNP

The format of this document is based on the idea of a move away from document idea to a more dynamic web based format (with a pdf printable version). This would be in the form of an overarching summary document with sector specific documents. The overarching document should contain the following; context, vision statement, the role of the natural environment important (by use of interactive diagram showing links), summary of structure and governance, priorities and 3-4 Tees Valley examples of how happening based on partnerships working. There will be links in the overarching documents to sector specific documents ,(health and wellbeing, economy, natural environment) which will make reference to national/local policies and strategies in each sector that natural environment relevant to, and give practical examples/case studies .

3. Draft text

A first draft of text is presented for discussion and input and at the meeting there will be some examples of interactive diagrams .

TVNP Vision draft text

The Tees Valley Nature Partnership is a new Local Partnership that brings together a wide range of partners to work collectively to promote (or deliver) co-ordinated decision making between social, economic and environmental concerns, to integrate the delivery of environmental benefits and services alongside economic and social benefits.

Our vision

A RICH AND HEALTHY NATURAL ENVIRONMENT IN THE TEES VALLEY TO CREATE A VIBRANT PLACE TO LIVE, WORK AND LEARN

Our economy, environment and society are all interconnected

Nature, people and industry have lived alongside each other in the Tees Valley for many years. The area is currently diversifying its economy, attracting investment and regenerating its neighbourhoods.

The rich natural assets of the Tees Valley form a vital part of our quality of life, with a healthy high quality natural environment providing the foundation to sustained economic growth, prospering communities and personal wellbeing.

The Tees Valley, like the rest of the UK, faces multiple challenges in securing sustainable economic growth, maintaining vibrant healthy communities and safeguarding and improving our environmental resources. There is growing recognition that nature doesn't represent a constraint to economic success, but can be an asset. The challenge focuses upon how we might utilise our natural environment to help our economy flourish, while also developing an economy that continues to value and protect that natural environment.

This will be presented as a colourful interactive diagram (a single circle divided into segments which link pressed for explanatory links. The purpose of the diagram is to demonstrate the wide ecosystem services that the natural environment can offer to economy and people without lots of text.

Add - with links that cover e.g. mitigation and adaptation to climate change, role of good quality GI in people's health and wellbeing and wildlife, recreation and visitor economy, low carbon economy etc

Structure of the Tees Valley Nature Partnership

The Tees Valley Nature Partnership was formed in 2012 and brings together a wide range of partners including environmental organisations, local authorities, government agencies, covering the interests of environmental, health and wellbeing and business sectors. It is composed of a Board that provides strategic leadership, which is supported by a management group and delivery groups,

(insert diagram on structure)

Our key aspirations are:

- To be an effective unified voice to champion the Tees Valley's environment
- To influence local plans, strategies and policies to integrate the delivery of environmental benefits and services alongside economic and social benefits or
- To provide a strategic framework for local environmental delivery

Priorities for the Partnership

Following stakeholder consultation during the first half of 2012 a number of key priorities can be identified for the Partnership:

- Raise the profile of the Tees Valley as an attractive place to live, work or visit by championing the value and contribution of the natural environment through strong leadership, advice and support
- Contribute to the preparation, review and implementation of local plans and strategies, and influence local decision making

- Continue to work to protect and enhance the geodiversity and biodiversity of the Tees Valley ensuring the conservation, restoration and creation of key landscapes and habitats
- Work at a landscape scale to restore and deliver robust ecological networks that demonstrate a wide range of environmental, social and economic outcomes, including mitigating and adapting to the impacts of climate change
- Seek positive outcomes for both nature and the local economy by working closely with the economic sector by providing objective knowledge, expertise and advice
- Make positive contributions towards the health and wellbeing of local people by demonstrating the opportunities that better access to and use of the natural environment can provide
- Work closely with local communities to ensure that these views are reflected in the activities and priorities of the Partnership, and that they understand the opportunities offered by the natural environment on their doorstep.

Natural assets box?

To add?

I found the economic asset section in the TVU statement of ambition very useful as I learn things about the economic sector in the Tees Valley that I hadn't appreciated and I think that it is the same for the natural environment of the Tees Valley, that other sectors may not appreciate how good it is, especially the diversity in character, and good accessible green infrastructure and valuable brownfield habitats, regionally important for water voles for example) as well as the more well-known International estuary bird sites It could simply be a box that people press with key bullets associated with a picture Sue

Current Partnership activity includes:

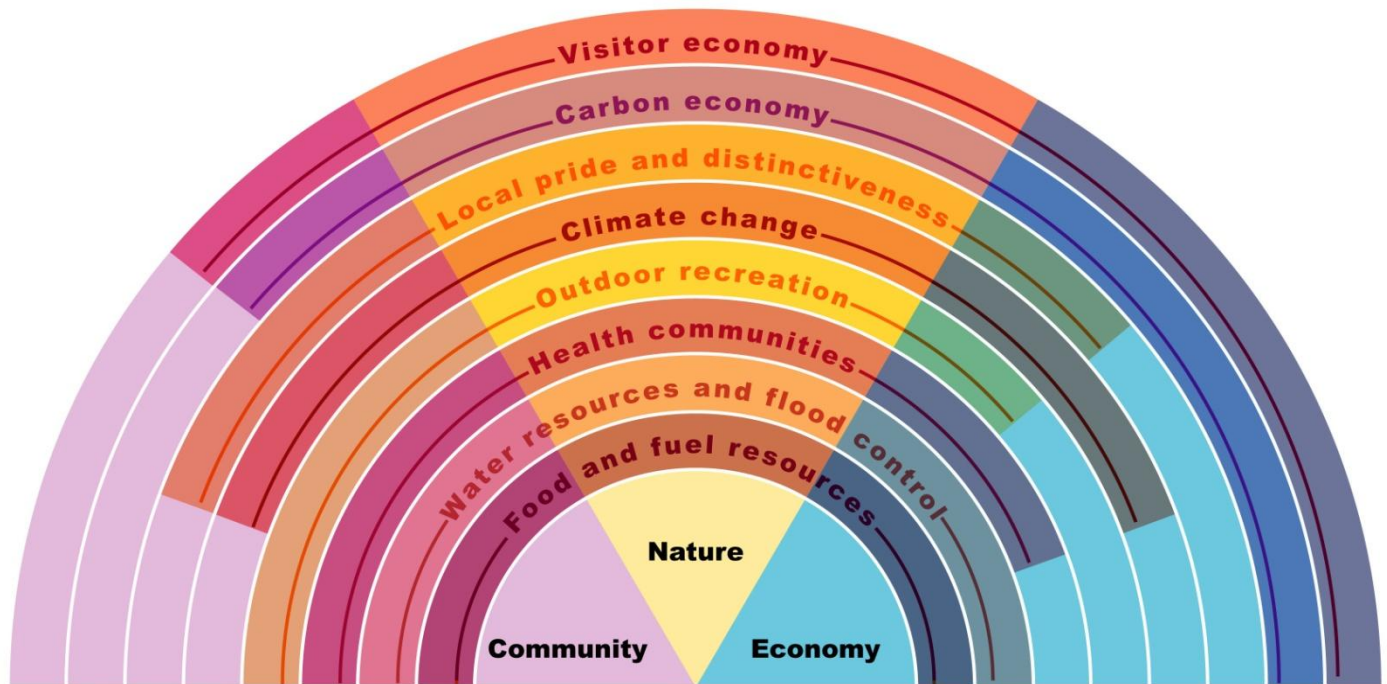
(Note- this will be a band 4 tiles, each one will be a picture and title where click for a paragraph of information as shown below and each one will have a web link where can link to relevant website page for fuller info)

- **Natural Network and Opportunity Mapping** – an exercise to map components of the local ecological network, wildlife corridors and the stepping stones that connect them to identify areas for landscape scale habitat restoration or creation; an immediate use of the project will be to provide the local planning authorities with up to date information on the environment and ecological networks helping them to develop appropriate policy responses in their local plans
- Creation of a Landscape Partnership - **River Tees Rediscovered** , whose goal is to bring back into focus the river's unique characteristics as well as celebrating its history and helping rekindle a sense of pride in river, its heritage and surrounding communities. The partnership, led by Groundwork North East, have secured a Heritage Lottery Fund earmarked first-round pass of £1,990,000, in 2012, including £99,500 of development funding, through its Landscape Partnership programme.
- Tees Valley **Growth Ready** project – an Environment Agency and Local Enterprise Partnership led initiative to develop 'evidence products' that will facilitate development with speed and confidence while at the same time influencing developments to protect and enhance the environment. The project also involves mapping spatial growth priorities and overlaying these with Defra environmental information to identify potential areas of constraint and opportunity. While designed to support economic investment, the evidence and mapping exercise offers opportunities to maximise potential for biodiversity and natural environment improvement.
- Development of a five year **Tees Valley Wild Green Places** initiative to increase appreciation and understanding of the natural heritage of public open spaces and provide opportunities for local community and youth groups to develop skills to record and care for this heritage. The project was awarded a first round pass and development grant from Heritage Lottery Fund in March 2013 to develop stage two application for the £760,000 project. The legacy of the project will be the increased biodiversity knowledge, skills and confidence within local communities to deliver long term development and care of wildlife in green spaces in partnership with local authorities.

As we develop the sector specific documents (e.g health and wellbeing, economy, natural environment) to fit into this overarching document via a picture /diagram.

Add link to website and contact details

Example graphic of ecosystem services diagram



Ecosystem Services that our natural environment provides



Terms of Reference

1. Context and broad role of the Partnership

The TVNP is a cross sector Tees Valley wide partnership that has been formed to take a strategic overview of the natural environment and look for ways to manage, enhance and promote it that will produce outcomes that integrate the needs of nature, people and the economy.

The TVNP has been formed as a response to the Natural Environment White Paper (NEWP) (2011) in which the government invited new and existing partnerships to come together to form Local Nature Partnerships (LNP). The TVNP received government recognition as the LNP for the Tees Valley in July 2012.

The NEWP recognises that a healthy, properly functioning natural environment is the foundation of sustained economic growth, prospering communities and personal wellbeing. The Tees Valley is home to the largest integrated heavy industrial area in the UK, which continues to create wealth and employment. Key priorities for the Local Enterprise Partnership (LEP) are to drive forward economic regeneration and to develop the transition into a high value low carbon economy and a creating a more diversified and inclusive economy. Improving health, wellbeing and educational attainment are key priorities of Local Authorities and Health providers. The role of the TVNP will be to bring together a wide range of partnerships and organisations working in the Tees Valley to act as a conduit to local and central government, providing a knowledgeable and objective voice for the natural environment. This will drive positive change for the Tees Valley natural environment by working collaboratively to develop a shared strategic vision. It will also set out and to coordinate delivery of strategic priorities to improve the natural environment that produces multiple benefits for the local economy and health and wellbeing. The TVNP remit will be to drive positive change for the Tees Valley's natural environment and to champion the role of healthy local natural environment and its fundamental contribution to local economic and social prosperity.

2. Vision statement

A rich and healthy natural environment in the Tees Valley to create a vibrant place for people to live, work and learn.

3. Geographic coverage

The TVNP covers the local authority areas of Hartlepool, Stockton-on-Tees, Middlesbrough, Darlington and Redcar and Cleveland.

4. Aims

Overarching aim

The partnership aims to coordinate and strengthen local action to secure a functioning, sustainable and resilient bio-diverse natural environment to improve the health, well-being and livelihoods of people in the Tees Valley.

Objectives

Following stakeholder consultation during the first half of 2012 a number of key priorities can be identified for the Partnership;

- Raise the profile of the Tees Valley as an attractive place to live, work or visit by championing the value and contribution of the natural environment through strong leadership, advice and support
- Contribute to the preparation, review and implementation of local plans and strategies, and influence local decision making
- Continue to work to protect and enhance the geodiversity and biodiversity of the Tees Valley ensuring the conservation, restoration and creation of key landscapes and habitats
- Work at a landscape scale to restore and deliver robust ecological networks that demonstrate a wide range of environmental, social and economic outcomes, including mitigating and adapting to the impacts of climate change
- Seek positive outcomes for both nature and the local economy by working closely with the economic sector by providing objective knowledge, expertise and advice
- Make positive contributions towards the health and wellbeing of local people by demonstrating the opportunities that better access to and use of the natural environment can provide
- Work closely with local communities to ensure that these views are reflected in the activities and priorities of the Partnership, and that they understand the opportunities offered by the natural environment on their doorstep

5. Structure and governance of the Partnership

5.1 Full partnership

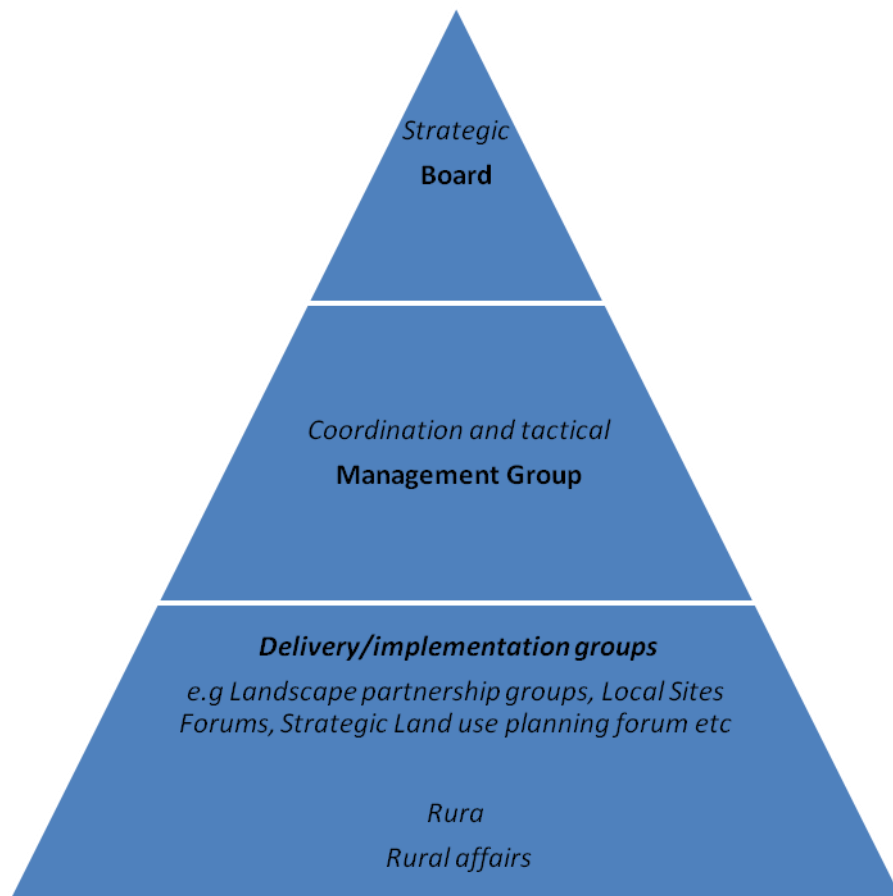
Membership of the TVNP is open to any organisation, public or private, government or non-governmental, corporate or incorporated, which is interested in furthering the work of the partnership and has agreed to the terms of reference of the partnership. The full partnership will convene at an annual partnership forum event.

The function of the annual forum will be;

- To provide an opportunity for all members of the partnership to contribute to discussion on the strategic direction of the TVNP
- To share and celebrate achievements of the TVNP and its member organisations
- To enable partners to share knowledge and best practice.

The TVNP will be governed by a board, which will be serviced by the management group and delivery/implementation groups.

Conceptual structure of partnership



5.2. Accountable body

The Tees Valley Wildlife Trust (TVWT) will act as the accountable body of the Partnership. This role will include;

- Establishing and maintaining effective systems
- Administering and taking responsibility for funding including ensuring structural financial procedures
- Ensuring that funding resources are spent according to agreed plans and priorities
- Establishing and maintaining effective systems of auditing and monitoring spend
- Responsibility for employing and managing any staff to carry out the coordination of the Partnership.

5.3 TVNP Board

Function of the Board:

The TVNP will be steered by a representative Board. The Board will provide strategic leadership and direction for the work of the TVNP. It will be responsible for the following roles:

- Defining the strategic priorities of the TVNP based on the aims of the Partnership
- To further develop the Partnership by reviewing and developing the TVNPs strategic aims, ensuring that they remain relevant and reflect the views of the partnership and the local needs of the Tees Valley
- Monitor and evaluate the effectiveness and performance of the TVNP to deliver integrated environmental benefits
- Champion the vision of the TVNP to ensure that this vision is communicated to wider decision makers across a diversity of sectors.

5.4 Composition of Board

The Board will comprise of 12-15 members. Each representative will have multiple interests and will not be representing a single organisation.

Membership of the board will be comprised of the following representatives;

- The Chair
- One collective representative of the five Tees Valley local authorities
- Two representatives of the natural environment charities
- One local community representative
- One collective representative of the Defra delivery agencies
- One representative of the LEP/business community
- One representative of the health and wellbeing sector
- One representative from a local academic institution
- One representative from the agricultural/rural affairs
- One representative from the countryside access, recreation and tourism sector
- One representative of a major natural heritage funder

The terms of reference for Board members appendix A.

5.5 Processes and procedures of the Board

The Board will meet at least twice a year to set strategic direction and monitor progress.

- The terms of reference of the Partnership will be reviewed annually
- Meetings will be minuted and, where appropriate, action points will be identified with the individuals or groups responsible shown.
- The chair of the Board will be rotated between meetings. Where possible the Board will make decisions based on consensus and agreement. If this is not possible then decisions may be taken by a majority vote of the Board members, with the meeting Chair having the casting vote. For a vote to be quorate at least one third of the Board members must be present.

6.6 Management Group and delivery groups

The work of the Board will be underpinned by a Management Group. Its role will be;

- To monitor, action and review progress against the partnerships objectives
- To implement strategic decisions of the Board by developing delivery mechanisms
- To support the Board with knowledge, expertise and recommendations as required
- To provide a communication link between the Board and the delivery groups to ensure effective working

Membership of the delivery groups will be from Partnership members. The number and remit of these groups will be fluid to meet the developing needs of the partnership. It is anticipated that some of these will be able to function effectively as an email groups.

The TVNP will act as the Local Sites Partnership for the Tees Valley by endorsing and adopting local wildlife sites as proposed by the Tees Valley local authorities to ensure that appropriate mechanisms are in place to monitor their management. This process will be coordinated by a delivery group.

Appendix 1

Terms of reference for Chair/Board Members

Expectations and role of Board Members will be to

- Champion the work of the Partnership to relevant partners, organisations and networks
- Provide strategic input into the key decisions of the board relating to vision, strategic objectives and delivery plans
- Actively seek opportunities to influence the strategy and plans of relevant organisations and groups to further the aspirations of the Partnership
- Represent and be accountable for the wider interests of their sector at Partnership meetings
- Operate in an open, responsive and accountable manner that adheres at all times to high standards and ethics and governance of public life

The role of the Board Chair

The principal duties and responsibilities of the Chair will be to;

- Build support for the vision and aspirations of the Partnership by acting as an influential advocate
- Chair Board meetings, having regard for the agreed procedures of the Partnership, fulfilling these duties in a manner that is free of political influence or bias
- Represent the Partnership, acting as a spokesperson at appropriate events, forums and meetings
- Ensure a culture of mutual respect, partnership working and equality of opportunity for the Partnership
- Ensure that the views of the wider partnership are represented and taken into account during decision making in order to deliver integrated benefits for the natural environment.

Our ref:

Your ref:

7 February 2013

Dear LEP Chairs

NEXT STEPS ON DELIVERY OF THE EU COMMON STRATEGIC FRAMEWORK 2014-2020

On 21 November 2012 the Government set out its proposed mechanism for delivering the EU Common Strategic Framework Funds in England in 2014-2020. These Funds are the European Regional Development Fund, the European Social Fund, the European Agricultural Fund for Rural Development, and the European Maritime and Fisheries Funds. In the current programme period of 2007-2013, the Funds total some £9 billion of support in England. The total value of funding may be reduced in 2014-2020, but nevertheless will provide a valuable opportunity to drive sustainable economic growth across England.

The proposed delivery mechanism for 2014-2020 was discussed at a series of consultative events in November and December in which over a 1000 people took part. I do hope that you, or a representative of your Local Enterprise Partnership, were able to attend. We are pleased to report that feedback at the consultative events was positive and we are now reflecting on how to address the issues that were raised.

To recap, the key features of our new model are:

- The European Regional Development Fund, the European Social Fund and a proportion of the European Agricultural Fund for Rural Development will be brought together into an 'EU Growth Programme' with a single governance structure. The Growth Programme's top priorities will be innovation/research and development, support for small and medium sized enterprises, skills, low carbon, employment and social inclusion. The European Maritime and Fisheries Funds, due to its size and focus, will not be included in the EU Growth Programme but we will look to align this Fund with other Funds where possible.
- The Funds available in the EU Growth Programme will be notionally allocated to Local Enterprise Partnership areas, decentralising funding downwards and away from the old government office regional boundaries.

- Each Local Enterprise Partnership will lead the development of an EU Investment Strategy, which will complement the Local Enterprise Partnership's wider economic strategic plan, and cover the whole geographic area covered by the Local Enterprise Partnership. The EU Investment Strategy will need to reflect the interests of a broad range of economic, social and environmental partners, including civil society, rural partners and higher education institutes (who will be especially important for the thematic objective of innovation).
- After a Local Enterprise Partnership's EU Investment Strategy has been agreed with Government, the Local Enterprise Partnership and its wider partners will work with local teams from the Managing Authority Departments and key delivery partners to develop an EU compliant pipeline of projects which deliver the strategy.
- The Local Enterprise Partnership and its wider partners, in consultation with various parts of national government (depending on theme), will prioritise the proposed investments. Managing Authorities will advise on this process and undertake the day-to-day work of the administration of the European Funds (due diligence, monitoring, audit, payments, etc). Ultimate financial accountability will rest with the recipient of the EU funds at the level of individual projects/contracts and with the relevant Managing Authority, as at present.

One of the themes that emerged from the road shows was the need for urgency if we are to have strong proposals for spending in place in time for 2014. We agree that we need to push forward as quickly as possible. Local Enterprise Partnerships might therefore find it useful to start the following activities:

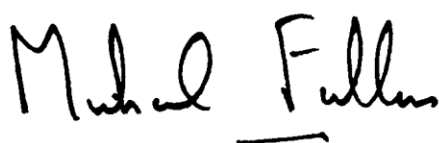
- engaging with groups or parts of their area not currently represented on the Local Enterprise Partnership Board which may be relevant for some kinds of activity supported by these European Funds (e.g. civil society, universities and environmental bodies). There are existing networks, such as Rural and Farming Networks and Local Nature Partnerships, who would be well placed to work in partnership with LEPs to ensure their EU investment strategies take into account the full potential of the local area.
- identifying key needs of their areas, against the various thematic objectives and investment priorities set out in the draft EU regulations. Local Enterprise Partnerships and their wider partners should consider which programmes/projects would be most transformative for their localities looking across the whole of their area – this might include small but locally significant projects. (Local Enterprise Partnerships will need to take account of the regulatory requirement to concentrate on a limited number of priority policy areas. We will need to work with Local Enterprise Partnerships to agree a basis for this prioritisation, which may mean that a number of the specific activities listed in the regulations will not be taken forward.)
- considering how key priorities for European Funds complement those set out in their Growth Plans.
- discussing potential scope for collaboration with other Local Enterprise Partnership areas; collaboration can be based on themes, particular projects or ease of delivery/oversight.
- considering possible sources of match funding – which will still be required for these European Funds.

We plan to publish outline guidance on EU Investment Strategies in the spring, alongside the Government's response to Lord Heseltine's recent review. This will say more about the role Local Enterprise Partnerships and wider partners will be invited to play, the support which will be available to them, and the timetable for implementation. We will use feedback from Local Enterprise Partnerships and wider partners as we develop this guidance.

We are currently considering how best to help LEPs with the resources required to take this work forward, and will provide more details as soon as possible.

We expect the EU Investment Strategies produced by Local Enterprise Partnerships and their wider partners to be considered by government at several stages of development, starting in autumn 2013. Due to the timing of various European negotiations and processes, delivery against EU Investment Strategies is unlikely to begin until the latter part of 2014.

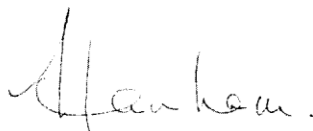
Thank you for your continued support as we take this work forward.



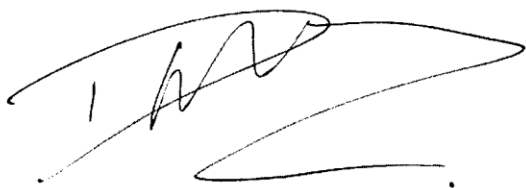
Michael Fallon MP, Minister of State for Business and Enterprise (with overall responsibility for the Common Strategic Framework Funds)



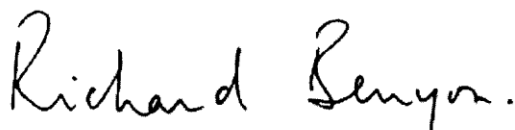
Mark Hoban MP, Minister of State for Employment (with responsibility for the European Social Fund)



Baroness Hanham, Parliamentary Under Secretary of State for Communities and Local Government (with responsibility for the European Regional Development Fund)



David Heath, Minister of State for Agriculture and Food (with joint responsibility for the Rural Development Programme for England)



Richard Benyon, Parliamentary Under-Secretary for Natural Environment, Water and Rural Affairs (with responsibility for the European Maritime and Fisheries Funds and joint responsibility for the Rural Development Programme for England)



Board meeting paper B/07.02.13

The Tees Valley Wild Green Spaces Project and relationship to other partnership HLF funding applications currently being developed in the Tees Valley

1. Background

The Heritage Lottery Fund (HLF) is a major funder of heritage in the UK, including natural environment projects that have a learning and participation focus. As other funding streams become increasingly squeezed HLF are experiencing a high demand across all of its grant programmes.

The TVNP is able to play a valuable role in providing a forum where TVNP member organisations can develop project ideas and grant applications, with input from other TVNP partners, which help to strengthen project plans as well as ensuring compatibility between projects and avoiding any duplication or overlap.

In the Tees Valley there are currently three natural environment themed projects that are being developed by partnerships within the TVNP. These projects have the scope for making available significant resources for a wide range of people to participate in environmental projects, bringing a range of social and educational benefits as well as improving the quality and accessibility of the Tees Valley's natural environment.

As a strategic partnership, it is not the role of the TVNP to be a delivery organisation of grant funding projects but rather to work by adding value and support to Partnership members by the sharing of expertise and maximising the collaborative use of resources.

The TVNP has adopted the development of a community based biodiversity project "Tees Valley's Wild Green Places" from the Tees Valley Biodiversity Partnership (TVBP). A round one application for a heritage grant was developed by Susan Antrobus, in conjunction with the Tees Wildlife Trust and the five Tees Valley local authorities, and two FE colleges. The Tees Valley Wildlife Trust would be the delivery organisation. This project was awarded a round 1 pass March 2013, with a development grant of £11,200 in and approval of a development phase for preparation of a stage 2 application of £480,000 in early 2014.

2. Tees Valley Wild Green Places

The objective is to increase appreciation and understanding of the natural heritage of public open spaces in the Tees Valley and increase the skills of local people to record and care for this heritage. This will be achieved by involving a wide range of community and youth groups in making small scale sustainable biodiversity conservation projects on a wide selection of public green spaces throughout the Tees Valley through volunteer programmes of practical biodiversity recording and practical conservation work. There will be opportunities to engage new audiences to enjoy, learn and care for their local biodiversity through tailored programmes of walks, family fun days, wildlife surveys, and conservation taster events.

The five year project will increase the natural environment skills base in the Tees Valley through local volunteers and young people gaining training in biodiversity identification and recording and nature conservation management. Young people will gain work based experience that will enable them to gain nationally recognised qualifications.

The project has four key objectives:

1. To record, monitor and enhance the natural heritage of a wide range of public open spaces
2. To increase appreciation and understanding of the natural heritage of public green spaces
3. To involve a wide range of local people in the planning and delivery care of the natural heritage public green spaces
4. To Increase skills in community volunteers and young people in the recording and management of the natural heritage in the Tees Valley.

The legacy of the project will be the increased biodiversity knowledge, skills and confidence within local communities to deliver long term development and care of wildlife in green spaces in partnership with local authorities and the Tees Valley Wildlife Trust.

3. River Tees Rediscovered Landscape Partnership

This is a Groundwork North East led Landscape partnership which has secured in July 2012, a HLF earmarked first-round pass of £1,990,000, including £99,500 of development funding, through its Landscape Partnership (LP) programme. Partner organisations comprise seven local authorities, Friends of Tees Heritage Park, Tees Archaeology, Local Access Forums, Tees Valley Rural Community Council, Natural England, Northumbrian Water, the Environment Agency, Canal & River Trust, RSPB, Tees Valley Wildlife Trust and Tees Rivers Trust.

The second stage application is due for submission in February 2014 and if successful the five year scheme will cover 120 square kilometres of the River Tees corridor. It will embrace sites including Saltholme Wildlife and Discovery Park within the North Tees Natural Network, Tees Barrage as a gateway to the Tees Heritage Park, which will be enhanced and strengthened by the project – then upstream to an increasingly rural offering at Piercebridge, near Darlington, all linked together through the Teesdale Way.

The partnership's goal of bringing back into focus the river's unique characteristics as well as celebrating its history and helping rekindle a sense of pride in the river, its history and surrounding communities. The project's aims are to;

- Forge a stronger connection between people and the river
- Strengthen communities
- Help people develop new skills
- Enhance the river environment for residents and visitors to enjoy today and in the future.

The Project's Development Manager (Anne- Louise Orange, Groundwork NE) is a member who sits on the TVNP Management Group and the Landscape Partnership involves many of the members of the TVNP in the development and delivery of the various projects that make up the initiative.

4. North Tees Goes Wild

North Tees Goes Wild is an RSPB led project focussing on providing families and young people with opportunities to experience and learn about the natural environment of the North Tees area. After submitting a successful expression of interest RSPB has been invited to submit an application to HLF for a stage 1 Heritage Grant. This is due for submission by the end of May 2013. Project partners include Teesmouth Field Centre, Natural England, Stockton and Hartlepool Borough Councils and the Tees Valley Wildlife Trust.

The North Tees Goes Wild Project delivery is complimentary to that of the Tees Valley Wild Green Spaces Project in that it will focus on formal and informal environmental education of school age young people and their families and

will involve visits to nature reserves/country parks in the North Tees Area. The Green Spaces Project is focusing on community involvement and training and biodiversity improvements to green spaces in the Tees Valley area. The two projects are extremely complementary as the RSPB project will focus on engendering a love and respect of the natural environment amongst Teesside families and the Green Spaces project will allow them to take an active role in protecting their natural environment. The RSPB Regional Fundraising Officer and the TVNP Development Manager plan to continue to work together to maintain niche separation in the projects whilst looking for opportunities for the projects to supplement each other.